

SEPTEMBER 2009

ring

AGRA CO-OPERATIVE LTD MEMBERS' NEWSLETTER

AGRA KOÖPERATIEF BPK SE LEDE NUUSBRIEF



BIRDS OF PREY

REALISE THEIR VALUE



World news in 2009 has been dominated by two major themes; the economic crisis and the climate change crisis. Neither crisis can allow for a clear prediction of the future. What we do know is that economic hard-times can create increased pressure on the natural environment and climate change will definitely impact nature. World Environment Day 2009 came and went, but the theme "Your Planet Needs You – Unite to Combat Climate Change" could not be more appropriate for the group of animals that have the highest number of endangered, threatened and vulnerable species in Namibia: birds of prey.

The presence or absence of birds of prey is recognized as an excellent measure of the state of an environment. Birds of prey are a control and balance of the numerous "pest" species that affect urban, agricultural and conservation environments. Being aware of which bird species are in an area, what they eat, where and why they live where they do and especially any changes in the composition of species or numbers can help with early warnings of environmental changes.

Birds do not see private or national boundaries; many species are local, intra- even inter-continental migrants; what happens in one area can have a ripple effect up to many thousands of kilometers away. Globally climate change will change rainfall patterns and temperatures and that will create changes in habitats and food resources. Economic pressures can result in a variety of responses from increases in poaching of livestock or game, to land managers' decisions to affect changes in stocking densities or annual expenditure on aspects of livestock management. Birds of prey as animals on the end or top of food chains are affected by any changes through a ripple effect.

Working towards a cleaner environment is everyone's responsibility. Maintaining biodiversity outside of the national parks is to everyone's benefit but perhaps mostly to land owners. Knowledge of birds of prey and knowledge of any changes in their population numbers and territories provide warnings to changes in their life-support systems



and these changes in the biodiversity of an environment may be a useful prediction source for future action. At first seem to be only a small part of planet earth, but if we cannot support that small part it seems unlikely that we will be able to support the whole.

Many farmers will remember, perhaps still own, the posters and booklets on Namibia's Large Birds of Prey as well as the Owls of Namibia. These publications have been out of print for some time, but Nedbank Namibia's environmental program, Go-Green has by popular demand sponsored the reprint of both posters and booklets.

The posters and booklets "Large Birds of Prey – Namibia" and "Owls of Namibia" can be collected at the offices of the Namibia Nature Foundation, from Nedbank Namibia branches or from AGRA branches countrywide. A limited number of copies are available.

Liz Komen, NARREC, P O Box 11232, Windhoek
Tel: +264 61 264409 /264256
Cell: +264 811290565
Email: liz@narrec.net or lizkomen@fastmail.fm

"I love to think of nature as an unlimited broadcasting station, through which God speaks to us every hour, if we will only tune in", George Washington Carver said. With the dawning of spring, when nature comes to life again, it is so good to be outside – to feel the lovely weather, smell the freshness of spring blossoms, see the colours coming back and looking forward to get rid of the layers of clothing.

What would our country be without our wonderful nature and the diversity for which Namibia is known? In this edition we take a closer look at birds of prey again. The contribution comes from NARREC, the Namibia Animal Rehabilitation Research and Education Centre. NARRECs outreach program provides attractive and relevant information on local wildlife species. This information aims to support biodiversity in general and birds in particular. Posters and booklets have been developed to increase awareness on the links between

natural and social environments that create risks for and threats to wildlife.

We further bring you the regular feedback on Agra events or events where Agra has been involved. There is also information on Clostridial diseases and the second article on feeding animals this time of the year.

For the ladies, or the men who love gardening, there is an informative article to assist in your preparation for the upcoming season.

Agra celebrated its 29th birthday on 21 August with lots of cake, balloons, specials and excitement. We also opened the newly renovated and bigger Auas Vet Med in the Auas Valley Shopping Mall. Congratulations to Agra and thank you once again to all the staff and our members and clients who helped Agra to become what we are today.

Thank you for the feedback that we receive regarding the Ring. Please let us have your comments, news, requests or suggestions. Communication in this regard can be sent to the Senior Manager: Corporate Affairs, Birgith Hoffmann at Private Bag 12011, Windhoek or by e-mail to birgith@agra.com.na

Best wishes and happy farming.



Albé Snyman
Kommunikasiebeampte
Privaatsak 12011, Windhoek
Tel: 061-290 9273
Epos: albes@agra.com.na



AGRA NEWS

DIS WEER DIE SKOUTYD

In baie dorpe in die land is 'n geskarrel van 'n ander aard. 'n Stukkie aarde wat heel jaar in doodse stilte gelê en wag het – die skougronde – ondergaan 'n gedaanteverwisseling. Dis weer skoutyd. Wanneer u hierdie Ring lees is die Stamprietskou waarskynlik al iets van die verlede. Agra was bevoorreg om deel te wees hiervan en is ook opgewonde om betrokke te wees by die volgende skoue:

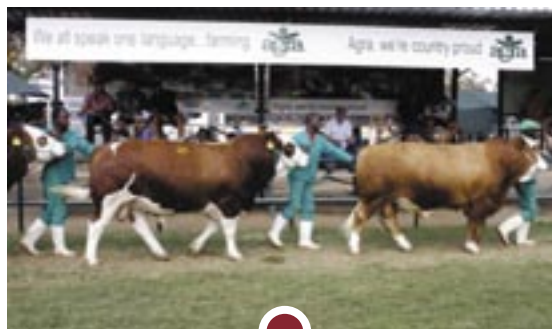
Otjiwarongo skou	3 – 5 September
Keetmanshoop skou	9 – 11 September
Outjo skou	11 – 12 September
Grootfontein skou	16 - 18 September
Rehoboth skou	17 – 19 September
Okakarara skou	17 – 19 September
Gobabis skou	23 – 25 September



Agra maak weer reg om die beste buitemuurse stalletjie te bou.

Windhoek skou wat van 25 September tot 3

Oktober plaasvind belowe weer om vir groot opwinding te sorg, by die Agra-stalletjie sowel as by die arena waar die lewende hawe kampioenskappe plaasvind. Die grootveeskouveiling word weer deur Agra aangebied op Vrydag 2 Oktober. Sal die rekord van N\$170 000 wat verlede jaar behaal is vir die Brahman-bul van Kaspar Günzel, by hierdie veiling gebreek word?



Agra is weer betrokke by baie lewende hawe kampioenskappe

Agra en Auas Vet Med sal weer, soos in die verlede, 'n spesiale diens lewer aan produsente deur veemedisyne en ander benodighede vir die skou beskikbaar te maak by die Agra-stalletjie. Indien u meer inligting verlang is u welkom om vir Tobie Barlow te skakel by 061-2909245.

BELANGRIKE KENNISGEWING AAN ALLE VERTONERS BY WINDHOEK SKOU

Gras en lusern vir u diere moet vroegtydig bestel word by die Agra Windhoek tak.
 Skakel vir Herman van Vuuren by 061-2909307.

Disclaimer

The materials contained in this newsletter, the Ring, are based on sources from third parties, including employees of Agra and are not and shall not be regarded as constituting representations, undertakings, promises or warranties, whether express or implied, of Agra and shall have no force or effect in respect of Agra.

The materials contained in this newsletter, are provided for general information purposes only. Every situation has a unique set of circumstances and specific professional advice should therefore be obtained for your particular needs. We accept no responsibility for any loss or damage which may arise from reliance on information contained in these pages.

GOEIE NUUS EN BAIE HOOGTEPUNTE BY TOP TIEN INLIGTINGSDAG EN VEILING

'n Innoverende inisiatief om Namibië se unieke bees genetiese materiaal plaaslik sowel as internasionaal beskikbaar te maak, is deur die Minister van Landbou, Water en Bosbou, John Mutorwa aangekondig op Donderdag 23 Julie. Die bekendmaking van die totstandkoming van Namibië CryoGenetics is baie goed ontvang deur die byna 200 boere en landbourolspelers by die spesiale geleentheid – die eerste Top Tien Bonsmara Telers-inligtingsdag by die Agra veilingskrale in Otjiwarongo.

CryoGenetics, 'n semen-en embriostasie, sal in Otjiwarongo gevestig word en deur 'n aantal privaat investeerders bedryf word. 'n Paneel van kundiges op die gebied van beesteling-en gesondheid sal verseker dat net die beste teelmateriaal beskikbaar gemaak word deur die sentrum.

Vir die beesvleisindustrie om 'n steunpilaar van die Namibiese ekonomie te bly, moet die produktiwiteit van die nasionale kudde geoptimaliseer word, het Minister Mutorwa aan die gehoor gesê. Die onderneming kombineer die kommersiële inisiatief van stoetteling met die breër perspektief van volhoubare ontwikkeling, waardetoevoeging,



Daar is gekuier en inligting uitgeruil by die Agra-stalletjie

Danie Bosman, 'n internasionaal bekende beeskenner het 'n teoretiese aanbieding en praktiese demonstrasie gedoen op effektiwiteitseleksie van bulle en koeie.

Sakkie Coetzee, Uitvoerende Bestuurder van die Namibiese Landbou-unie het terugvoer gegee aangaande die opkomende boere bulprojek en die aktiwiteite van die Opkomende Kommersiële Boere Ondersteuningsprogram.



Teetyd is kuiertyd. Mnr Kazmaier en Ben en Corlia Mouton wissel 'n paar woorde.

opleiding en die beginsel van nasionale genetiese verbetering in kuddes van alle beesrasse, was die minister se opmerking oor die inisiatief.

Die Top Tien inligtingsdag is verder ingekleur met waardevolle lesings.

Professor Isak Groenewald van die Universiteit van die Oranje Vrystaat het 'n filosofiese uitkyk op volhoubare landbou met die gehoor gedeel en die basiese beginsels uitgelig waaraan 'n onderneming moet voldoen om volhoubaar te wees.



Danie Bosman tydens die praktiese demonstrasie oor seleksie.

Ben Mouton van Wagner Bonsmaras, hooforganiseerder van die dag en inisieerder van die eerste Top Tien Noordelike Bonsmara veiling, het sy dankbaarheid uitgespreek vir die sukses van die dag. "Ons doel met hierdie dag was om kennis te deel aangaande beesboerdery in die algemeen, met alle boere en telers van alle rasse"

to continue on page 4...

continued from page 3...



Peter Kazmaier en Minister John Mutorwa in 'n gesellige luim voor die minister se toespraak

Hy het die borge bedank wat bygedra het tot die sukses van die dag. Hulle was Bank Windhoek, Agra, Santam; N-Wes Fosfaat, Kanaal 7 en Meatco.

By die Top Tien veiling die volgende dag is 56 Bonsmara bulle van uitstaande genetiese kwaliteit van ses telers uit vyf geografiese streke te koop aangebied. Die pawiljoen van die Otjiwarongo veilingkrale was volgepakk met meer as 170 mense, insluitend 60 kopers wat die veiling bygewoon het. Dertig geregistreerde Bonsmara verse en 65 kommersiële verse is ook verkoop. Kiep Lepen van Agra Stoetveedienste rapporteer dat die pryse wat behaal is bevredigend is. 'n Gemiddeld van N\$26 764 is behaal vir die Bonsmara bulle. Die stoetverse is verkoop vir 'n gemiddeld van N\$ 9 193 en die kommersiële verse vir 'n gemiddeld van N\$6 092.

Die hoogste prys van N\$55 000 is betaal deur Christo Strydom vir 'n Bonsmara bul van Ben en Corlia Mouton van Wagner Bonsmaras.



Kiep Lepen en Barend Dorfling van Agra, wat op die paneel van kundiges sal sien by Cryo Genetics, saam met die Bonsmara bul wat deur N-Wes Fosfaat van Mnr Edward Hansen (middel) gekoop is en aan die semenstasie geskenk is.



Ben Mouton, hooforganiseerder en Prof Isak Groenewald, gasspreker, saam met Minister Mutorwa.

Voor die aanvang van die veiling het Vehaka Tjimune van Meatco aangekondig dat nuwe kontrakte beskikbaar is vir produsente wat bees by Meatco wil verslag in die afseisoen – Oktober 2009 tot Desember 2009.

Die veiling het vir nog 'n hoogtepunt gesorg toe die eerste Bonsmara bul geskenk is vir die nuwe CryoGenetics semen-en embriostasie. Die donasie is gedoen deur N-Wes Fosfaat wat die bul by Edward Hansen gekoop het.



Die duurste bul van die dag, gekoop deur Christo Strydom (links) van Ben en Corlia Mouton saam met die afslaer, Eddie Reed van Agra.





AGRA NEWS

COMPETITIONS



Marius receives his prize from Dunell Pienaar of Bayer with Morné Nell and Marius Smit from Agra.

At the end of the Bayer Animal Health and Agra competition, Mr Marius van Niekerk was the lucky winner of the trailer. To be entered into the draw clients had to buy Drastic Deadline or any other Bayer product to the value of N\$2 500 or more. A lot of entries were received from all over Namibia from all the Agra Branches. Congratulations Marius!

Don't forget: as part of Agra's 29th Birthday promotion, two clients can drive away with two brand new Opel Corsa bakkies at the end of October 2009. The promotion starts 1 August 2009 country-wide and clients who buy for N\$1000 or more at any Agra branch or Safari Den will be entered into this competition.

29th Birthday Bash

Two Opel Corsa Bakkies up for Grabs!

Visit your nearest Agra branch or Safari Den for more details.



AGRA NEWS

AGRA AND THE COMMUNAL FARMERS CONSORTIUM

It is show time in Namibia, and livestock championships form an integral part of these events. Livestock breeders proudly exhibit what they have achieved with continued selection and introduction of selected genes (bulls and rams) supported by exemplary herd management, namely top quality cattle, sheep and goats. Whereas livestock shows and championships in the commercial farming area are well established, rapid development of similar shows in the communal farming sector is actively and successfully supported by the NNFU and other stakeholders. For the current year, 46 local and 9 regional shows have been scheduled. Like all shows, these events require substantial funding in addition to contributions made by farmers and communities themselves. To address this pressing need, the Communal Farmers Consortium was established in 2004 with the main aim of coordinating and consolidating support granted to this initiative by the private sector. The CFC members - the Meat Board of Namibia;

Namibia Breweries; Agricultural Bank of Namibia; First National Bank; Meatco; Feedmaster; Telecom Namibia; Sanlam Namibia and Agra this year contributed N\$400,000.00 in support of nine regional shows. Funding is allocated to contribute to the general costs of hosting the shows and to provide prize monies to the winners of various livestock categories. Thereby the consortium members are contributing to the effort of the Government of closing the gap between the communal sector on one hand and commercial farming sector on the other, and creating a unified farming sector. This however can only be achieved if the communal farmers are empowered both with skills, knowledge and the necessary financial resources to bring them in par with their counterparts in the commercial farming sector. Agra trusts that this initiative assists numerous farmers to become exemplary breeders winning top national prizes in the near future.



AUCTIONS

AGRA VEILINGS AGRA AUCTIONS

Die veldramveiling van Francois en Wallace Theron, Kobus van Wyk en Johan van Zyl op 7 Augustus was 'n spesiale geleentheid met kopers wat beloon is met pryse.

Die koper van die duurste bokram van N\$16 000 was W van R Versfeld van Gobabis. Die duurste Dorperam vir N\$ 4 250.00 is gekoop deur

K van Wyk van Aranos. H Karumendu van Gobabis het die duurste Van Rooy ram gekoop teen N\$ 3 750.00. Die duurste Persieram is vir N\$ 1 000.00 gekoop deur J Busch van Rehoboth en die duurste Boerbok ooi vir N\$ 2 900.00 deur Esau Kaakunga van Windhoek.



S Orren en A. Kandjii ontvang die ramme wat hulle gewen het tydens die veiling - geborg deur Corporate Guarantee - van Geon Ellis



KARAKUL

KARAKOELVEILING VOORUITSKOUING

MARKVOORUITSIGTE VIR DIE SEPTEMBER 2009 PELSVEILING

Met die bogemiddelde reën die afgelope seisoen wil dit voorkom of die pelsprodusente nog steeds oilammers laat loop en hul kuddes verjong. Slegs 51 231 pelse is ingeneem vir die September 2009 veiling teenoor die 55 162 van die September 2008 veiling. Vir 2008 is daar 139 811 pelse geproduseer teenoor die 124 983 van 2009, 'n daling van 10.6 %. Baie produsente se ooië het ook te laat begin lam vir die September 2009 veiling. Hopenlik sal daar 'n styging in die April 2010 pelsgetalle wees.

Sedert die April 2009 veiling het daar vier nertsveulings in Amerika, Kanada, Finland en Denemarke plaasgevind. Al vier hierdie veulings het 'n styging in die pelspryse getoon van vyf tot vyftien persent. Ander belangrike nuus is dat 'n rekord aantal kopers by die veulings in Finland en Denemarke geregistreer het. Dit wil dus voorkom of prysvlakke besig is om te herstel na verlede jaar se dalings.

Dit is ook die eerste keer in ongeveer 20 jaar dat wit swakara pelse weer op die veiling aangebied gaan word. Met die baie navrae vir wit swakara sien ons uit na wat gaan gebeur op die veiling.

Die sortiment is soos gewoonlik vir September, swaarder pelse met langer hare en met minder medium-grootte pelse. Die tendens van die styging in die aantal krulpelse wat verlede jaar ondervind is, het ook dié jaar weer voorgekom. Die wisselkoers is ons huidiglik nie baie goedgesind nie en dit kan moontlik 'n daling van $\pm 10\%$ veroorsaak.

Die vooruitsigte vir die komende veiling van 13 September lyk goed - ons hou net duim vas dat die wisselkoers se effek nie te groot is nie.

Wessel Visser
Agra Pelssentrum

NOTICE



AAN ALLE LEDE VAN DIE KARAKOELPRODUSENTE-FORUM

Neem asseblief kennis dat 'n ALGEMENE JAARVERGADERING belê is vir
DINSDAG, 22 SEPTEMBER 2009 om 08:00 in die CANYON HOTEL te KEETMANSHOOP.

SAKELYS

- 08:00 TEE EN KOFFIE & REGISTRASIE (N\$10-00 PER PERSOON)
- 08:15 OPENING EN VERWELKOMING
- 08:30 KONSTITUERING & ALGEMENE REËLINGS
Teenwoordig / Verskonings / Personalia
- 08:35 NOTULE
- Goedkeuring van Notule van 17 September 2008
 - Sake voortspruitend uit die notule
- 08:45 VOORSITTERSVERSLAG VAN DIE KARAKOELRAAD 2008/09 EN BESPREKING
- 09:05 JAARVERSLAG VAN DIE KARAKOELRAAD 2007/08 EN AANWENDING
VAN RAADSFONDSE EN HEFFINGS – R Schreiber
- 09:35 OORSESE REISVERSLAE
Hong Kong – G Biwa, Mifur – K van Wyk
- 09:50 BINNELANDSE PROJEKTE – W J Kohlman
- 10:00 TEE EN KOFFIE
- 10:20 TELECOM
- 10:40 TOEKOMS VAN KARAKOELNAVORSING-, OPLEIDING EN- VOORLIGTING – P Hugo
- 11:10 VERKIESING VAN RAADSLEDE – G Biwa en R Schreiber se termyne verval 31/12/09
- 11:20 KARAKOELRAADSBEGROTING 2009/10
- 11:30 BESPREKINGSPUNTE
- 12:00 INLIGTINGSESSIE
- Toepassing en afdwingbaarheid van COP – B Rothkegel
 - Sortiment – W Visser
 - Verbod op pelsproduksie - W Visser
 - Produksie tendense – J van Zyl
- ALGEMENE BESPREKING - Ope bespreking oor enige karakoelsake, soos tyd toelaat
- BEDANKINGS
- AFSLUITING
- 13:00 MIDDAGETE (SAL TE KOOP AANGEBIED WORD)
- 18:30 DINEE (KTG 90 jaar)
Aanwys van Top 10, Beste- en Naasbeste Pelsprodusent
Goue Lam & Oorkode Toekennings
Kopenhagen Fur / AGRA Kwaliteit Toekenning
Gevorderde kursus sertifikate
KTG Prestasie Registrasie Kompetisie (Skou) Toekennings

NOTICE



KENNISGEWING VAN DIE 29ste ALGEMENE JAARVERGADERING VAN LEDE VAN AGRA (KOÖPERATIEF) BEPERK

KENNIS geskied hiermee van die nege-en-twintigste Algemene Jaarvergadering van Lede van AGRA (KOÖPERATIEF) BPK. wat gehou sal word op die plek en datum soos hieronder aangedui.

PLEK: Agra/Bank Windhoek Ring
Windhoek Skougronde, Bell Straat, Windhoek
WINDHOEK
DATUM: 27 NOVEMBER 2009
TYD: 09:00 (registrasie 08:30)

IN OPDRAG VAN DIE RAAD
L van Wyk - Sekretaris, Privaatsak 12011, WINDHOEK
11 September 2009

NOTICE OF THE 29th ANNUAL GENERAL MEETING OF AGRA (CO-OPERATIVE) LIMITED

NOTICE is hereby given that the twenty ninth Annual General Meeting of members of AGRA (CO-OPERATIVE) LIMITED will be held at the place and date as mentioned below.

PLACE: Agra/Bank Windhoek Ring
Windhoek Showgrounds, Bell Street, Windhoek
DATE: 27 NOVEMBER 2009
TIME: 09:00 (registration 08:30)

BY ORDER OF THE BOARD:
L van Wyk - Secretary, Private Bag 12011, WINDHOEK
11 September 2009



ANIMAL HEALTH

CLOSTRIDIAL DISEASES

THE ENTEROTOXAEMIA COMPLEX

Diseases caused by the toxins produced by bacteria belonging to the group **Clostridia** play a very important role in veterinary medicine and include common diseases of livestock like Botulism, (Lamsiekte) Tetanus (Klem-in-die-Kaak), Black Quarter (Sponssiekte), Malignant Oedema (Kwaadaardige Edeem) and Gas Gangrene of the uterus (Baarmoeder Sponssiekte). These conditions have been dealt with in previous editions of the *Ring*. In this edition we shall discuss a disease complex generally referred to as "Enterotoxaemia" and caused by various types of toxin producing **Clostridium perfringens** bacteria.



Enterotoxaemia as a cause of sudden death

Definition: Enterotoxaemia (Entero + tox + aemia). This term refers to a condition characterized by the presence in the blood of toxins produced in the intestines, these toxins being of bacterial origin.

Clostridium perfringens, previously referred to as **Clostridium welchii**, was first described in 1891 as the **Bacillus** of Acute Articular Rheumatism. It is a typical representative of the genus **Clostridium** which needs conditions without oxygen to grow. It is widely distributed in nature and occurs in soil sewage and water, as well as in the intestinal tract of humans and warm-blooded animals. It is absent from the stomach, but present in small numbers, both as vegetative bacteria and spores in the small and large intestines of most animal species.

Clostridium perfringens types produce five major lethal toxins, being alpha, beta, beta 2 epsilon and iota toxins, which are used for dividing them into the different types A, B, C, D, E and Unassigned. The toxins, alone or in combination are responsible for the various disease conditions associated with this group of bacteria. The diseases they cause are not only due to their local effects on the intestinal tract, which may vary from insignificant to very severe, but also due to the effect on the whole body, the systemic effect of toxins after they have

been absorbed into the bloodstream from the intestine.

Clostridium perfringens is associated with a wide variety of diseases that affect most domestic animal species and humans and include enterotoxaemia, haemorrhagic and necrotic enteritis traumatic wound infection, septicemia after abortion and infections during the period following birth, also referred to puerperal infections. It is one of the most widespread and potentially pathogenic organisms in nature. It is one of the causes of food poisoning in humans.

1. Pulpy Kidney Disease (Enterotoxaemia, Overeating Disease, Bloednier (Afr.)

Pulpy Kidney Disease is a peracute, acute or occasionally chronic infectious enterotoxaemic disease that is common in sheep, uncommon in goats and virtually unknown in cattle in southern Africa. It occurs all over the world, wherever small ruminants are maintained. It was first described in New Zealand in 1903 and thereafter in Australia, the UK, USA and South Africa. From 1948 Pulpy Kidney Disease started to occur sporadically in Namibia. In the following years disease outbreaks were reported from all sheep farming districts of the country. From 1951 prophylactic vaccination was propagated. That the disease remains one of the most important diseases of sheep in Southern Africa today is confirmed by annual vaccine sales which exceed 50 million doses.

The disease is caused by the systemic effects of **Clostridium perfringens type D**, epsilon toxin which is absorbed into the blood circulation from the intestinal tract where it is produced when the bacteria multiply rapidly. Sheep of all ages can be affected but young animals in good condition are particularly susceptible. The disease occurs with a change in nutrition, usually with a change to a higher plane of nutrition, from poor quality to good quality and following de-



Haemorrhagic enteritis as a result of **Clostridium perfringens D** infection



Pulpy Kidney Disease, the typical appearance of the affected kidney

worming. Sudden changes from poor veld grazing to lush cultured grazing, feeding of lucerne, green wheat and oats, overeating on concentrates and protein rich feed and coccidiosis are possible contributing factors. These conditions, especially the presence of

to continue on page 10...

continued from page 9...

large amounts of carbohydrates give rise to rapid multiplication of the bacteria in the gut and toxin production by these bacteria, which then causes the symptoms. Peracute and acute cases are characterized by sudden death and chronic cases by the development of neurological symptoms because the brain can be affected. In goats the disease may be peracute as in sheep, or it may manifest as acute or chronic diarrhoea, terminating in death or as a chronic, lingering debilitating



Monovalent vaccine for the vaccination against Pully Kidney Disease



Polyvalent vaccines containing Clostridium perfringens Type D toxoid



condition. Pully kidney can also occur in calves and young adult cattle kept in feedlots. Animals affected by Pully Kidney Disease invariably die too acutely to allow any form of treatment.

Prevention and control is by vaccination with monovalent Pully Kidney vaccines or polyvalent vaccines containing **Clostridium perfringens Type D** toxoids and by proper management of nutritional changes. It is imperative that sheep must be vaccinated before they are dewormed.

With any vaccination program, the following needs to be considered:

- Young lambs between 2 and 44 days do not respond well to vaccination against Pully Kidney Disease
- The presence of passive immunity in the lamb, derived from immune dams protects them for 13 to 19 weeks
- Passive immunity does not interfere with the ability of the lamb to produce an immune response following vaccination
- In order to provide young lambs with colostrum-derived passive immunity which will protect them until they are old enough to be actively immunized, pregnant ewes may be vaccinated.

Lambs can be vaccinated at two to three months of age for the first time and given a second vaccination four weeks later and another booster six to eight months later, followed by annual re-vaccinations.

Ewes which have been previously vaccinated require only a single vaccination four weeks before lambing, while those which have not been previously immunized should be vaccinated twice, at an interval of four weeks, second injection being given about four weeks before lambing. The vaccination regimen for goats is the same. The administration of certain vaccines to goats may cause the development of persistent lumps at the injection site, which can be confused with caseous lymphadenitis lesions.

Other diseases caused by Clostridium perfringens are:

Clostridium perfringens Type A infections.

Synonyms: Sudden death, enterotoxaemia, necrotic enteritis, haemorrhagic enteritis, equine intestinal clostridiosis, yellow lamb disease.

Although there is uncertainty about the pathogenicity of **Clostridium perfringens Type A** in animals a number of diseases have been associated with it. It is considered to be one of the causes of gas gangrene arising from penetrating wounds in cattle, horses, sheep and humans. It is a rare cause of gangrenous mastitis in cattle and acute mastitis in sheep. The enterotoxaemia associated with this organism usually results in sudden death. The death of lambs due to enterotoxaemia known as yellow lamb disease in California and Oregon, USA has been ascribed to this organism. In South Africa a form of haemorrhagic enteritis sporadically occurs in sheep in the winter rainfall area of the Western Cape Province. This is a peracute to acute fatal disease. There is still a lot of uncertainty about the exact role of this organism in the development of diseases and how they occur and develop.

Clostridium perfringens Type B infections:

Synonyms: Lamb Dysentery, Bloedpens (Afr.)

Lamb Dysentery is a peracute to chronic enterotoxaemia caused by mainly by the beta toxin produced by **Clostridium perfringens Type B** in the intestines. It usually affects lambs and goat kids less than 14 days of age. It is characterized by haemorrhagic enteritis resulting in sudden death after a few hours in peracute and acute cases or after four or more days in chronic cases. The disease occurs endemically in all the sheep farming areas of South Africa.

Clostridium perfringens Type C infections:

Synonyms: Struck, enterotoxaemia in young lambs and calves, haemorrhagic enteritis in foals and piglets.

Diseases caused by **Clostridium perfringens Type C** are largely unknown in South Africa and the organism is rarely isolated. Generally epidemiological data on the disease in various animal species are scant.

References

Infectious Diseases of Livestock 2nd edition; J. Coetzer & R Tustin
Diseases and Parasites of Cattle, Sheep and Goats in South Africa; P. Oberem, D. Odendaal et al
Entstowwe en Immunisering van Plaasdiere; J. Du Preez & Faffa Malan.

Dr Rainer Hassel

Baie boere se skape wat met 'n entstof teen bloednier behandel is, vrek nogtans omdat siektes wat dikwels as bloednier gediagnoseer is, nie bloednier is nie.



Totale aanslag teen KLOSTRIDIALE SIEKTES

Die dieregesondheidsmaatskappy Ceva Animal Health het 'n nuwe polyvalente geïnaktiveerde entstof vir die voorkoming van klostridiale siektes by skape bekendgestel. Dié entstof, Coglavax[®], verleen wye dekking wanneer dit aan skape toegedien word, en is daarom meer doeltreffend as monovalente (enkel) entstowwe wat boere dikwels vir inenings teen siektes soos bloednier en rooiderm gebruik.

Die gebruik van die Coglavax-entstof verleen aktiewe immunisering teen die volgende siektes:

- Bloednier
- Rooiderm
- Sponssiekte
- Gasgangreen
- Klem-in-die-kaak
- Kwaadaardige eedeem
- Enterotoksemie (dermkanaalvergiftiging) by volwasse skape en lammers
- Nekrotiese lewerontsteking
- Basilêre dikdermontsteking.



'n Gesonde nier regs en bloednier links. Wat was die veroorsakende organisme, *C. perfringens* A of D?

Met klostridiale besmettings is *Clostridium perfringens* A die grootste boosdoener. Dit is die heersende tipe bakterie wat by dermkanaalvergiftiging, bloednier en rooiderm voorkom.

Klostridiale organismes is 'n breë groep bakterieë wat 'n wye verskeidenheid siektes kan veroorsaak deur die gifstowwe wat dit vervaardig. *C. perfringens* produseer 17 toksiese gifstowwe waarvan vier, naamlik Alfa, Beta, Epsilon en Iota dodelik is.

Opnames in Europa toon duidelik dat die Alfa-toksien, wat die meeste deur die stam *C. perfringens* A geproduseer word, vir die meeste vrektes (90%) by skape verantwoordelik is. Dit is bykans onmoontlik om 'n nadoodse ondersoek tussen klostridiumstamme te onderskei. Daarom word die siekte dikwels verkeerdlik as bloednier gediagnoseer. Die enigste metode waarmee die siekteveroor sakende organisme bepaal kan word, is deur die Elisa-laboratoriumtoets.

Coglavax van Ceva Animal Health is ontwikkel met die oog op die voorkoming van *C. perfringens* A by skape, wat verantwoordelik is vir tot 90% van alle vrektes wat deur dermkanaalvergiftiging veroorsaak is. Met die ontwikkeling van die produk is 'n dekadellange mistasting met die identifisering van bloednier as oorsaak van vrektes by skape nou bewys.

Dermkanaalvergiftiging (enterotoksemie) is 'n baie algemene siekte wat oral aangetref word en met hemorragiese letsels, epiteelafsterwing of afsterwing van die bindvlies gepaardgaan. In werklikheid vernietig die toksien die selwande van organiese weefsel.

ONDER: Gesonde epiteelselle (links) word (regs) binne een uur vanaf besmetting met die toksien *Clostridium perfringens* tipe-A Alfa vernietig



Hierdie vernietigde weefsel, asook die afbreek van senuweeselle, verhoed dat behandeling met antibiotika die aangetaste organe doeltreffend bereik. Daarom word inenting teen die siektes bô behandeling aanbeveel.

Die Alfa-toksien het die vermoë om baie vinnig in getalle toe te neem. Binne een uur kan 'n hoeveelheid van 100 000 daarvan per milliliter derminhoud tot 12,8 miljoen per milliliter derminhoud vermeerder. Dit dui op die dodelikheid van vergiftenis en waarom vrektes sô vinnig intree.

Coglavax van Ceva Animal Health is 'n baie veilige produk om te gebruik, en kan selfs toegedien word aan dragtige ooe tot en met twee weke voordat hulle moet lam.

Die draermateriaal waarmee die entstof geformuleer word, veroorsaak minimale ongerief en toon geen nadelige plaaslike reaksie of weefsel skade nie.

Buiten die stam *C. perfringens* A, beskerm Coglavax skape ook teen die C- en D- stamme van *C. perfringens* asook ander klostridiale siektes wat deur *C. novyi* B, *C. septicum*, *C. tesani* en *C. chauvoei* veroorsaak word.

Skaapboere, soos mnr. Toit Fourie van Volmoed, Proteem, in die Suid-Kaap, wat Coglavax gebruik, is vol lof vir dié produk. "Waar baie vrektes van gesonde skape (tot ses per week) voorheen voorgekom het wanneer goeie reën geval en groen weidings beskikbaar geraak het, is dit nou met die gebruik van Coglavax uitgeskakel. Dit is gewis een van die beste nuwe middels op die mark en ek is nie 'n oomblik spyt dat ons dit begin gebruik het nie," sê hy.

Coglavax[®], Reg. Nr. G3684, Wet 36 van 1947.

Navrae: Ceva Animal Health
Tel: 011 314-9359/9965
Faks: 011 314-9246
Epos: sales@mdb.co.za
Webwerf: www.mdb.co.za

Die epidemiologiese opname van 161 gevalle van klostridiumverwante skaapvrektes in Europa en die daaropvolgende tipering van die veroorsakende toksiene.

Tipe <i>Clostridium perfringens</i> en verskillende tipes toksiene (Data gepubliseer en opgeteken)				
A	B	C	D	E
Alfa	Alfa, Beta, Epsilon	Alfa, Beta	Alfa, Epsilon	Alfa, Iota
90%	0%	0%	10%	0%

Foto: M. van der Merwe



Vir navrae kontak Ceva Animal Health (Edms) Bpk by Tel: +27 (0)11 314-0441 • Faks: +27 (0)11 314-0446
Epos: info.za@ceva.com • Webwerf: www.ceva.com

CEVA ANIMAL HEALTH



FIELD MANAGEMENT

FEEDING FARM RUMINANTS

LICK SUPPLEMENTATION

From the previous article in the *Ring of August*, it is clear that the dietary requirements of Namibian farm livestock are met in summer, but not in winter and also not in “spring. It is also apparent that, the more an animal relies on grazing in winter, the more supplementation it needs. Conversely, browsers require less supplementation than grazers all year round.

So, what supplementation is required in winter?

The biggest need is for P supplementation and it is an absolute need for probably the whole year. The low P content of grass forage has its origin in the P deficiency and high Ca content of most soils in Namibia. The higher the level of production expected of livestock, the more P they need; a need that is increased by the abysmally high dietary Ca:P ratio which inhibits the absorption of P from the gut. Cattle need at least 25 g P/day, of which less than half would come from their winter veld diet and the remainder would have to be supplemented. If not, they develop the typical deficiency symptom “pica” in many areas of Namibia¹, chewing stones, bones and other unusual objects. Sheep need about 2 g P/day. Even though they are less susceptible to a P deficiency than cattle and are probably able to meet their requirement from winter veld, one can only be certain that they indeed do get enough P by supplementing them. Boer goats probably do not need P supplementation in winter because they get enough from their browse-based diet. Failing to supplement cattle and sheep with P in winter retards growth, disrupts animal maintenance, lowers fertility and lifetime production and decreases parasite and disease tolerance. P is supplemented in summer mixed with salt only, which attracts animals and in turn limits intake, and in winter mixed together with salt, protein and energy.

There is also a need to supplement protein and energy to cattle and sheep in winter, but this is a relative need determined by management objectives. Cattle and sheep kept at maintenance level in winter because they are not supplemented with protein and energy will look and perform poorly, but can make up the deficit by compensatory growth in summer, during the rainy season, if they have access to veld in good condition. If the veld is not in good condition, they will not be able to compensate for lack of supplementation and their lifetime productivity declines. The condition of the veld is crucial for the decision whether to supplement or not: if the veld is in poor condition, e.g. due to overgrazing and inappropriate grazing management, the nutrient content of the diet decreases markedly² (Figure 5) and the need for protein and energy supplementation increases accordingly.

The usual decline in the nutritive value of the diet brought about by the change of season is more pronounced if the grass sward is degraded

by overstocking. Figure 5 illustrates how the nutritive value of the diet of cattle decreases due to grass sward degradation caused by keeping three times more cattle at the “high” than at the “low” stocking rate. Farmers that produce beef off degraded veld have therefore to supplement their cattle more by giving more lick or availing a lick of higher quality (more concentrated nutrients, better quality nutrients)

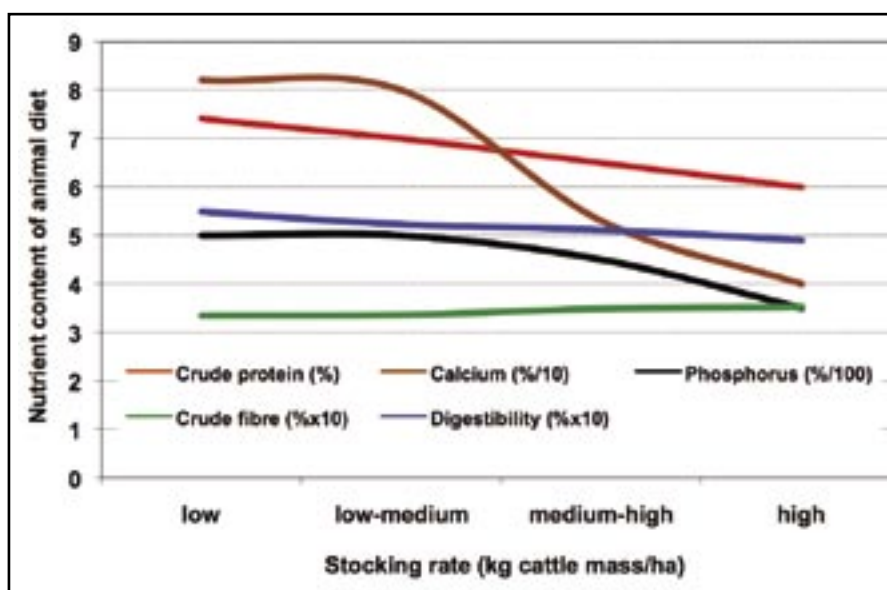


Figure 5: The nutritive value of veld, and hence the nutrient content of the animal diet declines when veld condition worsens due to overgrazing. At the high stocking rate, three times more animal mass was stocked on the land than at the low stocking rate.

to their cattle. The same principle applies, of course, to sheep, goats and other domestic ruminants (and wild ruminants for that matter), but definitive Namibian research is still needed. Usually, giving more of the same lick (i.e. replenishing lick more often or making it more palatable by reducing its salt and increasing its molasses content) or availing a better-quality lick is more expensive. This is, however, the price to pay for rangeland degradation.

Cattle in Namibia select forage for its protein and not its energy content³, yet it is the protein content of winter grazing that is most often limiting, especially on poor and degraded veld. However, it makes little sense to supplement proteins in the absence of energy⁴. Most proteins in conventional winter licks are derived from cheap non-protein nitrogen (NPN) sources. Rumen microbes can only successfully capture the highly volatile fermentation products of NPN if they have enough energy to convert them into microbial proteins, as explained in July. Adding some readily-available energy to NPN licks enhances their effectiveness drastically with little effect on their price. Even when extra protein is supplemented as high-quality protein, extra energy pays as it empowers rumen microbes to ferment plant fibres more aggressively, thus availing the extra energy needed to convert dietary protein into microbial protein. Of course, if NPN is the only source of crude protein,

¹: Roodt, W., 2007. Namibian supplementation research. Feedmaster, Windhoek, Namibia
²: Rothauge, 2006 (ibid) ³: Rothauge, 2006 (ibid) ⁴: Meissner, 1999 (ibid)

it also has to be accompanied by additional sulphur because most essential amino acids contain sulphur.

Reproductive females are in much greater need of protein and energy supplementation than growing young livestock, and often need higher-quality protein than a low-cost NPN source. Females need a consistently high intake of protein and energy to reproduce regularly and to reach their genetic potential for fertility. If they fail to conceive once for lack of supplementation, they can compensate afterwards as much as they can: they will not be able to re-conceive the offspring they did not conceive in time and their lifetime reproductive performance declines. When weighing up the short-term expense of buying lick and lick ingredients against the long-term benefits of improved lifetime reproduction, a farmer should rather err on the safe side and take the long view!

How and when to supplement winter lick in Namibia

Considering the poor P status of most Namibian soils, the sub-optimal veld condition on most Namibian livestock ranches and the high demands on livestock in terms of regular reproduction and lifetime productivity, it is probably necessary to supplement P, protein and energy in the form of winter lick on most farms for the whole period that the grasses are dry and dormant; a period of 7-9 months. The harsher the winter and the worse the veld condition, the more the need for supplementing other nutrients as well, especially micro-minerals and vitamins. Many micro-minerals are needed by rumen microbes and are thus best supplemented through the lick or by drenching while it is the ruminant itself that needs vitamins, so these are commonly supplemented by injection.

Once lick is given, it should be given consistently to ensure a stable rumen environment. Do not give much (in surplus) and then nothing (too little) because "it averages out". It is of little value. Rather balance the intake of lick by manipulating its salt and molasses content. Commercial licks are usually well-balanced to achieve the required minimum daily intake yet prevent over-indulgence⁵. Giving a lick as a hard block rather than a loose meal also prevents over-indulgence and is a good option for those giving lick for the first time, or giving lick very infrequently. Put out lick in a sufficient number of lick containers (one for every 30 animals) so that even subordinate animals get a chance to frequent a lick container and get their fair share of lick (Figure 6). Obviously, lick containers should be designed to reduce and not encourage wastage of licks. Animals should not be able to push them over and the containers should prevent "wasters" such as guinea fowls, warthogs and baboons from spoiling and despoiling the lick.

Keep winter lick dry, especially towards the start of the next rainy season, as standing water in a lick container may contain too high a concentration of NPN that kills animals ("urea poisoning"). While it is certainly cheaper to mix your own licks and use your own lick ingredients, it is also riskier as there is no quality control and product guarantee.

Finally, there is the philosophical dilemma of whether to supplement lick in the first place. Indigenous animals (wild animals and livestock

breeds like Sanga/Nguni cattle and Damara sheep) developed without lick supplementation and adapted by needing fewer essential nutrients per unit of body mass and by re-cycling them better; becoming more efficient. Supplementing these animals with lick will make us lose these valuable properties within a few generations and having to rely more-and-more on lick supplementation in future. This scenario is analogue to man's dependence on fossil fuels and the concomitant neglect of alternative energy sources. Especially since anything is possible with a good lick, even mass gain and fattening of animals in winter. But should we go there? Firstly, it will be very expensive and secondly, we don't want to breed animals that grow and fatten on lick. We want animals that convert the available veld forage and not lick into meat. So perhaps those with a love for indigenous livestock breeds should concentrate on the adaptation of these breeds to our inhospitable environment by providing them with as little lick as possible. Their "efficiency" characteristics can then be utilised in directed cross-breeding with less adapted, potentially more productive breeds that produce more if they enjoy more intensive (expensive) management. The same philosophical dilemma exists with parasite resistance and disease tolerance. As far as animal nutrition is concerned, however, the veld is the resource underlying livestock production in Namibia. It is expensive enough already, if one considers the price of land itself and the cost of developing it for livestock production (fencing, water provision, etc.). We should not add to this cost by farming with animals that have to be pampered and can no longer grow out on veld in good condition; animals that need lick to substitute for veld forage rather than merely supplementing a few lacking nutrients. The key to economical livestock production in



Figure 6: Enough lick containers should be provided so that there is no wrestling for lick space

Namibia is good veld management; management that makes as much veld forage available, of as high a nutritive value as is possible under our semi-arid conditions with pronounced seasonality, rainfall variability and the predominantly poor soils that occur over most of Namibia.

Dr Axel Rothauge
Special Projects Consultant

⁵: Roodt, 2007 (ibid)



GRONDVOORBEREIDING VIR LENTE 2009 NUWE AANPLANTINGS

Vir die meeste van ons tuiniers kruip die lente nog so om die hoek weg, maar daar wag 'n kleurvolle lente-tuin om uit sy winterslaap te ontwaak. Met die korrekte grondvoorbereiding en voeding die lente, kan ons tuiniers verseker wees van 'n pragtige tuin die komende somer. Aangesien Namibië se grond baie arm is aan natuurlike voedingstowwe en ten einde die beste prestasie uit tuinplante te verkry, moet daar gesorg word dat voldoende voedingstowwe beskikbaar is vir die plant, of dit nou blomdraende struik, vrugtebome of grasperke is.

Grondvoorbereiding is die belangrikste aspek by aanplanting van ons tuinplante. Hier volg dus nou 'n paar riglyne om ons plante tot hulle volle potensiaal te laat ontwikkel gedurende die komende somerseisoen.

Organiese materiaal:

Dit is nodig om te weet dat organiese materiaal 'n baie belangrike rol speel in die voorbereiding van ons grond. Organiese materiaal hou kortliks die volgende voordele vir tuingrond in:

- Dit verhoog die algemene vrugbaarheid van grond.
- Dit kondisioneer die grond, deurdat dit die mikrobiële aksie in die grond stimuleer wat nawerkende vrystelling van voedingstowwe tot gevolg het.
- Verhoog die voghouvermoë van die grond en bevorder die deurlugting van grond.
- Organiese materiaal (humus), sal die grond-aksie uitruil kapasiteit verhoog wat op sy beurt weer die grond se vermoë om voedingstowwe te behou en nutriënte vry te stel, soos die plant dit benodig.

Vorme (bronne) van organiese materiaal kan wees; ou gesifte beesmis, perde-mis, goeie gehalte kompos, asook die meeste organiese voedingstowwe op die mark beskikbaar.

Fosfor (P):

Fosfor bevorder veral wortelgroei, maar dra ook by tot die algemene ontwikkeling van die plant. Dit is relatief staties in die grond, en word gevolglik nie maklik uitgelooë nie. Aangesien Namibiese grond in die algemeen 'n tekort aan beskikbare fosfor toon, behoort kunsmis met 'n hoë fosfor-inhoud toegedien te word tydens die ontwikkeling van 'n nuwe tuin of wanneer struik, bome of grasperke aangeplant word. **Superfosfaat** is 'n misstof wat slegs fosfor bevat. Meeste misstofmengsels beskikbaar vir die huis-tuinier bevat egter ook 'n hoeveelheid fosfor. **Beenmeel** is ook 'n goeie bron van fosfor, aangesien dit 10% fosfor bevat. Dit bevat egter ook 4% stikstof, wat welige groen groei tot gevolg het.

Gevolglik word gekyk na die praktiese toepassing van bogenoemde wanneer ons 'n nuwe grasperk, struik of boom aanplant;

Nuwe grasperke:

Voordat gras aangeplant word, moet die grond deeglik voorberei word. Spit die grond om tot 'n diepte van 100 tot 200mm, en haal alle onkruid, wortels en los klippe uit. Strooi Superfosfaat of Beenmeel

eweredig teen 90 g/m², tesame met goeie organiese materiaal en werk dit in tot die volle diepte van die losgemaakte grond. Strooi dan Wonder 2:3:2 of Wonder 2:3:4 teen 60 g/m² en hark dit deeglik in die boonste grondlaag in. Saai of aanplanting van die grasperk kan nou geskied.

Aanplanting van struik:

Vierkantige gate, nagenoeg 0,5 x 0,5 m moet 0,5 m diep gemaak word. Meng die helfte van die uitgegrawe grond met 750g Superfosfaat of Beenmeel, tesame met goeie organiese materiaal en plaas terug in die gat, stamp hierdie grondmenschel 'n bietjie vas. Plaas die struik in die gat, bo-op hierdie grond-mengsel en gebruik die oorblywende grond vir opvulling.

Aanplanting van bome:

Vierkantige gate, nagenoeg 1,0 x 1,0 m moet 1,0 m diep gemaak word. Meng die helfte van die uitgegrawe grond met 1500 g Superfosfaat of Beenmeel, tesame met goeie organiese materiaal en plaas terug in die gat, stamp die grondmengsel 'n bietjie vas. Plaas dan die boom in die gat bo-op hierdie grond-mengsel en gebruik die oorblywende grong vir opvulling.

Vorbereiding van bestaande grasperke, vir die lente:

Semi-gevestigde grasperke:

Gereelde grasssny bevorder die verspreiding en matvorming van grasperke. Begin aan die einde van die winter met 'n toediening van Wonder Organic Pellets teen 150 g/m² of Wonder Organic Lawn teen 80 g/m². Volg na ongeveer ses weke op met 'n toediening Wonder 7:1:3 teen 60 g/m² of Wonder 3:2:1 (SR), wat stadigvrystellende stikstof bevat, teen 45 g/m², elke vier tot ses weke gedurende die groeiseisoen. Maak die grasperk baie goed nat na elke kunsmistoediening.

Gevestigde grasperke:

Sny grasperke baie kort aan die begin van die lente, om groei te stimuleer en die opbou van 'n dik grasmatt te voorkom. Belug die wortels van die grasperk, indien nodig, deur middel van 'n tuinvurk of penroller, nadat die grasperk deeglik natgemaak is. Begin met 'n toediening van Wonder Organic Pellets teen 150 g/m² of Wonder Organic Lawn teen 80 g/m², volg na ongeveer vier tot ses weke op met 'n toediening Wonder 7:1:3 of Wonder 3:2:1 (SR), deur die toediening elke vier tot weke te herhaal, gedurende die groei-seisoen. Onthou om die deeglik nat te maak, na elke kunsmis-toediening. Indien nodig kan goeie gehalte onkruidvrye bogrond gebruik word om die grasperk gelyk te maak.



Besoek gerus u naaste Agra-tak vir 'n verskeidenheid van tuinsorg-produkte en advies.



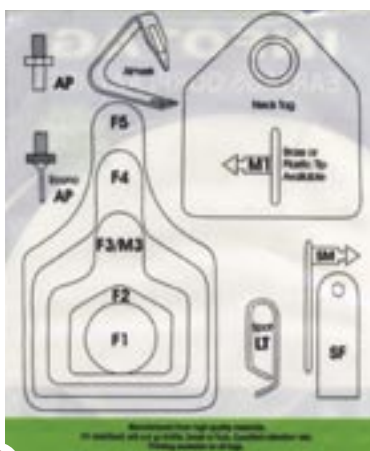
AGRA PRODUCTS

TOERUSTING VIR IDENTIFIKASIE VAN DIERE

EQUIPMENT FOR IDENTIFICATION OF ANIMALS

Although the [] their livestock. Agra still provides in all the needs for animal identification and branding as per the current regulations.

Alhoewel die [] oorplaatjies beskik vir die identifikasie vir bemarking van hulle diere. Agra voorsien in all die benodighede vir diere-identifikasie soos in die huidige regulasies bepaal.



Flexible plastic tags (With brass or plastic pointed males)
Available in different sizes and colours
Available in 9 different colors: From f5 to f1 as well as Sheep Male (SM) and Sheep female (SF).

*Buigbare plastiek plaatjies (met punte van koper of plastiek)
Beskikbaar in verskillende groottes en kleure.
Beskikbaar in 9 verskillende kleure van grootte f5 tot f1 asook in Skaap 'male' (SM) en skaap 'female' (SF)*

Can also be branded with figures and letters.

Syfers en letters kan ook op die plaatjies aangebring word.

Leader tags (LT) available in 16 different colours in hard plastic

Leader tags (LT) beskikbaar in 16 verskillende kleure in harde plastiek



Please remember:

bring your Meat Board registration card with when ordering these ear tags at Agra branches.

Onthou asseblief:

bring u Vleisraad registrasiekaart saam wanneer u hierdie oorplaatjies by Agra bestel.



Aluminium ear tags currently available at all Agra branches. Identification numbers are punched on the tags as per the current branding regulations for small stock.

Aluminium oorplaatjies beskikbaar by alle Agra-takke. Identifikasienommers word op die plaatjies ingeslaan soos deur die huidige identifikasieregulasies vir kleinvee bepaal word.

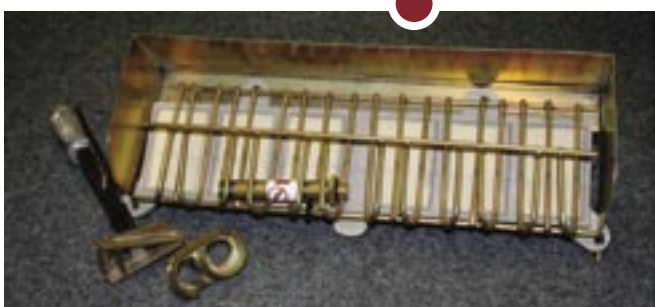
New ear tag introduced to the market, which is available at Agra branches. Can be bought with or without punched numbers. No need to make hole in ear, directly apply to ear, less labour intensive – can be done by one person.

Nuwe oorplaatjie in die mark, beskikbaar by Agra takke. Dit kan gekoop word met of sonder ingeslaande nommers. Dit is makliker om die plaatjies aan te wend, nie nodig om 'n gaatjie in die oor te maak - dus minder arbeidsintensief - kan deur een persoon gedoen word.



Applicators for all types of ear tags are also available at all Agra branches.

Tange vir toediening van oorplaatjies is ook beskikbaar by alle Agra-takke.



REMEMBER:

Existing FANmeat ear tags for cattle are also still available at your Agra branch and must be ordered well in advance.

ONTHOU:

Bestaande FANmeat oorplaatjies vir beeste is ook steeds beskikbaar by u Agra-tak en moet voortydig bestel word.

Visit your Agra branch for any tattooing or branding equipment or call Auas Wholesalers at 061- 2909284

Besoek u Agra-tak vir enige tattooëer of brandmerktoerusting of skakel Auas Wholesalers by 061-2909284

PhoSure...

(Die ou-bekende, waterbestande fosfaat-spoormineraalkonsentraat)

IN SONSKYN EN SOUSWEER!

Met PhoSure, KK Animal Nutrition se unieke waterbestande fosfaat-spoormineraalaanvulling, is reënskade iets van die verlede.

- Waterbestand weens die insluiting van 'n unieke sproeigedroogde melasse byproduk.
- Vorm 'n beskermende lagie om reënskade te beperk en lekverliese te voorkom.
- Bevorder produksie en vrugbaarheid.
- Verbeter groei en skeletontwikkeling.
- PhoSure bevat verhoogde vlakke van die belangrikste spoorminerale in die regte verhouding tot fosfor.

Innoverende oplossings in diervoeding!

Kemira Phosphates (Edms) Bpk. H/A KK Animal Nutrition Reg. Nr. 2001/025850/07
Posbus 449, Umbogintwini, 4120

Tel: +27 (0)31 910-5100 | Faks: +27 (0)31 904-3741 | Webtuiste: www.kkan.com | E-pos: kk@kkan.com

PhoSure 12 - Reg. Nr. V12858 (Wet 36/1947)



A. & H. FARMPARTNERS

Verkoop 600 WIT KARAKOELE per veiling

JACK ALBERTYN begin AFTREE. Boerdery word afgeskaal na meer "pensioenaris-vriendelik" – 'n klompie swart karakoele en 'n troppie Bonsmaras.

Die wit karakoele word ná die *Elite Veiling* van **23 September 2009** verkoop.

Die veiling vind om **14:00** by die krale in **Keetmanshoop** Skougronde plaas

Die lotte van tussen 10 en 50 word volgens ouderdom (1 - 6 jaar) en pigmentasie aangebied.

TOEKENINGS AAN A. & H. FARMPARTNERS:

- Vyf keer **BESTE SWAKARA PRODUSENT** van die Jaar
- Tien keer een van die **TOP 10** vir die jaar
- Die Top 10 word sedert Desember 1993, dus na reeds 34 veilings, bekendgemaak. Lovedale Farming behaal die **TOP 10 PER VEILING** 30 keer met A. & H. in 'n tweede plek met **25 TOP 10 PER VEILING** aanwysings.

Produksie uit A. & H. wit oioie

	2006	2007	2008
D sel.	1%	1%	-
O sel.	1%	2%	1%
Vlak sel.	18%	17%	7%
I	21%	25%	21%
II	6%	3%	12%
Krul sel.	10%	9%	5%
I	13%	14%	18%
II	4%	4%	6%
Witbont en diverse kleure	18%	19%	18%
Swartbont en diverse kleure	8%	6%	12%
Getal wit pelse bemark	619	543	459

A. & H. produksie- en prysresultate sluit swartbont en diverse kleure (uit wit) in terwyl dit by veilingresultate nie bygetel word nie.

A. & H. pryse teenoor veilinggemiddeld

	Veiling wit N\$ per pels	A. & H. wit ens. N\$ per pels	A. & H. % beter as veilinggem.
April 2006	455.50	492.78	+8%
September 2006	571.53	579.35	+1%
April 2007	544.97	591.47	+9%
September 2007	463.74	492.37	+6%
April 2008	504.58	512.79	+2%
September 2008	480.18	494.73	+3%
April 2009	400.24	412.10	+3%



Jack Albertyn is in 2008 weer as die beste karafoelprodusent vir die jaar aangewys. Hy het sy prys van Birgit Hoffmann van Agra ontvang.

Arnold Klein 081 127 1459
Nico van Zyl 081 332 1026
Jack Albertyn 063-683272

