



STUD SERVICES

MET BREEDPLAN IS NAMIBIË OP DIE VOORPUNT VAN WÊRELD GENETIKA

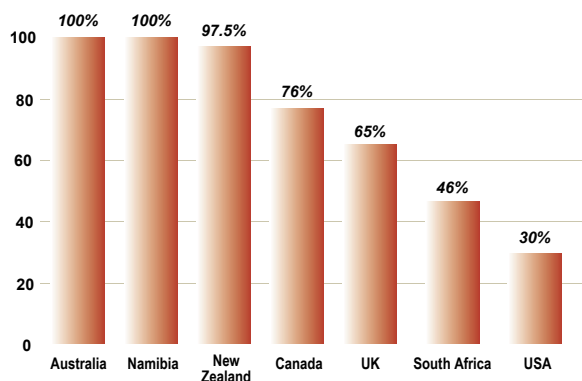
Niemand kon vyf jaar gelede die omwenteling in die Namibiese Stoetveebedryf voorspel het nie. Die genetica was altyd daar, maar 'n nuwe fokus op prestasietoetsing en seleksie met moderne seleksie metodes het die bedryf sonder twyfel 'n massiewe hupstoot gegee. Verwikkelinge by die Namibiese Stoettelersvereniging (NSV) het ook hiertoe bygedra.

Die harde en taai omgewings waarin die Namibiese beeste gedy, asook laer arbeidskoste, boere wat goed opgelei is, en kuddes wat goed bestuur word, sit Namibiese telers in 'n unieke posisie. As gevolg van bogenoemde is die aanvraag na genetica vanaf Afrika internasionaal aan die groei, omdat internasionale telers van Afrika genetica hou.

Om internasionaal te kan meeding, het Namibië egter 'n stelsel nodig wat telers op 'n gelyke vlak sal plaas. Dit is waar BREEDPLAN inkom.

BREEDPLAN word as die mees gevorderde genetiese evaluasie- en prestasiestelsel in die wêreld beskou. Figuur 1 gee die persentasie registrasies vir vleisbeeste op die BREEDPLAN stelsel. Namibië se 100 % sluit in al die rasse wat by die NSV hul registrasies laat doen.

Fig. 1 Percentage of Beef Registrations per Country on ABRI software



Die fokus van die BREEDPLAN stelsel is om diere te identifiseer waarmee die kommersiële boer meer geld sal maak. Dit is belangrik

om op BREEDPLAN syfers bulle uit te soek, want BREEDPLAN neem die raaiwerk uit seleksiebesluite. Geen mens kan 'n dier se gene sien nie. Twee diere kan dieselfde lyk, maar geneties kan hulle totaal verskil. Deur net na 'n bul te kyk, kan jy nie sê of sy dogters genoegsame melk sal hê nie, of geneties vrugbaar sal wees nie. Die kommersiële koper kan ook nie voorspel hoe groot 'n bul se nageslag by geboorte gaan wees nie, en hoe bulle se kalwers sal uitgroeï nie. Wat gaan die karkasopbrengs van sy nageslag wees? Hierdie is die wesenlike faktore wat winsgewendheid van die boerdery onderneming bepaal.

BREEDPLAN gebruik die wêreld se mees gevorderde genetiese evaluasiestelsel om Beraamde Teelwaardes (EBVs) van aangetekende beeste vir verskeie eienskappe te verskaf. Die stelsel kan tans negentien, ekonomiese belangrike eienskappe meet en evalueer (Tabel 1) insluitende meeste groei, karkas en reproduksie eienskappe.

Groei	Vrugbaarheid	Karkas
Geboortegewig	Skrotumomvang	Oogspierarea
200-dae melk	Dae tot kalwing	Vetdikte (rib)
200-dae gewig	Dragtigheidslengte	Vetdikte (kruis)
400-dae gewig	Kalwingsgemak – direk	Karkasgewig
600-dae gewig	Kalwingsgemak – dogters	Vleisopbrengs %
Volwasse koei gewig		Binnespiervet

Tabel 1. Eienskappe wat tans deur BREEDPLAN gemeet word.

Met elke kilogram vordering in die stoetveebedryf, baat die kommersiële boer ook daarby, want die genetica word uiteindelik na die kommersiële sektor oorgedra. Komersiële boere kan gerus hulle diere op die stelsel registreer. In lande soos Australië is bykans 50 % van alle prestasie data vanaf die kommersiële sektor.

Komersiële boere kan die internet gebruik om alle besonderhede van elke dier op die stelsel op te soek (Figuur 2). Dit sluit in die teler se besonderhede, asook alle stamboom en prestasie inligting. Die NSV se webblad is www.nsba.iway.na. Om alle genootskappe by BREEDPLAN op te spoor, gebruik die webbladsy www.breedplan.co.za. (Die Suider Afrika komponent kry bykans 600 000 besoeke per jaar).

to continue on page 2...

BREEDPLAN word as die mees gevorderde genetiese evaluasie- en prestasiesstelsel in die wêreld beskou. Dr Michael Bradfield neem u breedvoerig deur hierdie internasionaal erkende stelsel wat vir stoetveeprodusente daar gestel is.

Die jagseisoen het reeds afgeskop en gepaardgaande hiermee bring ons aan alle Agra kliënte ons jaarlikse jagkompetisie waar fantastiese pryse gewen kan word. PMP vier hierdie jaar sy 70ste bestaansjaar en Agra is tans die verspreider wat hierdie ammunisie die langste hanteer.



Dr Rainer Hassel se gereelde skrywe oor dieregesondheid dek hierdie keer 'n wye reeks oor geskeduleerde siektes wat volgens wet deur die Direktooraat Veeartsenydiens beheer word. U kan dus meer oor hierdie siektes lees wat elders in die Ring verskyn.

Enkele reaksies word ontvang op die uitnodiging om te reageer op artikels in die Ring of om behoeftes uit te spreek vir artikels wat graag geplaas moet word. Ek glo daar is baie suksesverhale of ervarings uit ons landbougemeenskap wat ons deur middel van die Ring met ons lesers kan deel.

Laat gerus van u hoor. Stuur u bydraes aan die bemarkingsbestuurder van Agra, Birgit Hoffmann by Privaatsak 12011, Windhoek of per e-pos aan birgith@agra.com.na

Groete tot 'n volgende uitgawe.



Alida Coertzen
Kommunikasiebeampte
Agra (Kooperatief) Bpk
Privaatsak 12011
Windhoek
Tel: 061-290 9234
E-pos: alidac@agra.com.na

continued from page 1...

Figuur 2. Enige dier op BREEDPLAN kan op die Internet stelsel opgesoek word.



Baie kuddes produseer nou verkoopsnageslag wat 10 % swaarder op dieselfde ouderdom is as voor daar met prestasieaantekening begin is. Om daardie voordeel vir om en by 1 % verkoopsinkomste te behaal, beteken 'n hoër voordeelskoste vir BREEDPLAN. Voordeelskoste van om en by 15:1 is haalbaar, veral in kuddes wat prestasieaangetekende diere met 'n wins verkoop vir teeltoeleindes. Hierdie voordele sal verder verhoog na gelang jy in staat gestel word om vordering te maak ten opsigte van jou kudde se vrugbaarheid en ander geselekteerde kenmerke, deur bulle met BREEDPLAN syfers gebruik te maak.

Om op te som: BREEDPLAN is 'n billike teelwerktuig wat jou help om meer geld in jou sak te bring, ongeag of jy geregistreerde of kommersiële diere teel, of beide. BREEDPLAN voorsien telers van beter inligting waarmee besluite oor hul teelprogramme gemaak kan word. Dit is wat so goed is daaromtrent. Dit is waarom dit internasionaal so'n groot sukses was en steeds is.

Dr Michael Bradfield

“DON'T SHOOT IN THE DARK”

ANNUAL HUNTING COMPETITION KICKS OFF



It's hunting season again. At Agra you have the opportunity to win lots of prizes in our annual hunting competition. Shoppers have the opportunity to win BIG PRIZES; including 3 Rhino walk in freezers.

This competition is open to everybody who shops at Safari Den, Auas Vet Med or any

Agra branch countrywide. Whether you are a hunter or busy preparing for an outdoor excursion, you should definitely visit Agra or Safari Den to stock up on much needed hardware, gardening, outdoor and hunting accessories. We have it all. You don't need to be a member of Agra to enter the competition.

to continue on page 4...

continued from page 2...

Entering this year's competition is really easy. For more information on the competition rules, see our separate information sheet on the following page.

During May, June and July there will be a national draw each month, where the participants stand a chance to win BIG PRIZES!

MAY PRIZES

1. Rhino Walk in Freezer
2. Safari Den Voucher (N\$ 1 000.00)
3. Meat-O-Matic Meatsaw
4. Medicine Voucher (N\$ 1 000.00)
5. Ryobi 3 in1 Toolkit
6. Vanellus C30 Motoroil 20 Ltr

JUNE PRIZES

1. Rhino Walk in Freezer
2. Yale Home & Office Safe
3. 4-Man Tent
4. Feed Voucher (N\$ 2 000.00)
5. Efekto Voucher (N\$ 500.00)
6. Roux Syringe

JULY PRIZES

1. Rhino Walk in Freezer
2. Snomaster S/Steel Freezer 80 Ltr
3. Feed Voucher (N\$ 2 000.00)
4. Willard Battery Voucher (N\$ 500.00)
5. Vanellus C30 Motoroil 20 Ltr
6. 5-Division Toolbox

Prizes can not be exchanged for cash. Fuel prizes are excluded from this competition. You are free to enter as many times you like. The competition will run from the 1st of May until the end of July 2008. Details are available at Safari Den, Auas Vet Med and all Agra branches countrywide. Judges decision is final and Agra will not enter into any correspondence regarding this competition.

The range of prizes is great; winning is easy. It really is worthwhile to visit any Agra branch, Safari Den or Auas Vet Med this winter - you only have to spend N\$ 1 000 and you will stand the chance to win great prizes.

Agra Buying Office



CONTROL AND PREVENTION OF SCHEDULED DISEASES

Scheduled diseases are animal diseases which, by law are controlled by the Directorate of Veterinary Services.

Scheduled diseases are also referred to as notifiable diseases, because the state veterinarian must be notified in case such a disease should occur.

These diseases are controlled by the government, due to their economic importance for the live stock industry or because they are zoonotic diseases, or both. Not all scheduled diseases occur in this country, but the control measures are aimed at preventing them from breaking out and becoming a problem in Namibia. Government veterinary services control scheduled diseases by means of:

- Controlling the movement of animals and animal products inside the country, by means of a veterinary movement permit system.
- Controlling the import and export of animals, animal products and animal feeds, by means of veterinary import permits and health certificates.
- Quarantine and testing for certain diseases of animals which are imported from certain countries.
- Regular routine stock inspections of livestock on the farms by animal health technicians under the control of a state veterinarian.
- Compulsory vaccinations: It is compulsory by law to vaccinate all cattle annually against anthrax, as well as all heifers between the ages of 3 and 9 months against bovine brucellosis with Brucella Strain 19 vaccine. By law all dogs must also be vaccinated

against rabies, every 3 years. If dogs are to be transported across international borders, however, the rabies vaccination may not be older than 1 year.

- Meat inspections in abattoirs by veterinary public health technicians under the control of a state veterinarian.
- Compulsory testing of certain food producing animals, for example dairy cows for Brucellosis and Tuberculosis.
- Cordon fences (game-and stock proof) to control the movement of game. This is aimed at preventing the spread of highly contagious diseases like Foot-and-Mouth disease inside the country. Some of these veterinary cordon fences still originated from the last Foot-and-Mouth disease outbreak south of the "Red Line" in 1963.
- Border fences (game – and stock proof), to prevent the movement of game and live stock across the international borders.
- Special control measures like double fences or game camps inside farms where Blue Wildebeest are kept to control Bovine Malignant Catarrh or special fences for pig sties to prevent African Swine Fever.
- Making the reporting of an outbreak of a scheduled disease, or the suspicion of such a disease, compulsory by law (notifiable).
- Specific surveillance programs by testing samples from animals for diseases like BSE, Newcastle Disease, Avian Influenza and Brucella Melitensis.

to continue on page 6...

Don't Shoot in the Dark

Hit the Target

Competition Rules

Buy for N\$ 1 000.00 or more and qualify for a chance to draw a key from the jar. If your key opens the lock, you stand a chance to win an instant prize at your Agra branch.

Keys will be awarded to you on the following scale:

N\$ 1 000.00 - 1 key

N\$5 000.00 - 2 keys

N\$10 000.00 - 4 keys

N\$20 000.00 - 6 keys

N\$50 000.00 and more - 8 keys

You may only draw one key at a time from the jar provided. Put the key back, shake and draw your next key.

If your key did not open the lock, you still stand a chance to win **BIG PRIZES** in the monthly draw. Write your particulars on the back of your till slip. Place it in the entry box provided.

During May, June and July there will be a national draw each month, where the participants stand a chance to win **BIG PRIZES!**

Prizes cannot be exchanged for cash.

The competition runs from the 1st of May 2008 until the 31st of July 2008.

Fuel purchases are excluded from this promotion.

Judges decision is final and Agra will not enter into any correspondence regarding this competition.



agra

SERVICE-RANGE-COUNTRYWIDE

continued from page 4...

The following diseases are scheduled or notifiable diseases in Namibia:

African Horsesickness, African Swine Fever, Anthrax, Aujeszky's Disease, Avian Influenza (Bird Flu), Bluetongue, Bovine Malignant Catarrh, Bovine & Ovine Brucellosis, Chlamydiosis & Psittacosis, Contagious Bovine Pleuropneumonia (CBPP, Lungsickness), Contagious Equine Metritis, Corridor Disease, Equine Infectious Anaemia, Equine Viral Arteritis, Foot-And-Mouth Disease, Glanders, Hog Cholera (Classical Swine Fever), Lumpy Skin Disease, Nagana, Rabies, Rift Valley Fever, Rinderpest, Scrapie, Sheep Scab, Swine Vesicular Disease and Tuberculosis.

A few of the more important notifiable diseases are discussed in more detail below.

The following notifiable diseases have already been discussed in previous issues of the Ring:

African Horse Sickness, Avian Influenza, Bluetongue, Lumpy Skin Disease and Rift Valley Fever.

ANTHRAX - Anthrax is a bacterial disease caused by *Bacillus anthracis*, which causes a fatal septicaemia (blood poisoning) within a very short time, and animals die very acutely (suddenly) without showing symptoms. Animals are usually found dead with dark red tarry blood oozing from the nose and anus. The bacteria form very resistant spores as soon as they are exposed to air (oxygen). These spores are also very heat resistant and survive in the environment for many years. Alkaline soil is an ideal environment for anthrax spores. The disease is caused when these spores are inhaled or ingested. It is prohibited to cut open a carcass of an animal which has died of anthrax, to prevent the contamination of the environment by these highly resistant and dangerous spores. Flies can transmit the spores mechanically when they engorge on the blood of a carcass and then deposit drops of it on leaves of plants.



A typical post mortem finding is the severe enlargement and dark discolouration of the spleen. The disease can be diagnosed very easily by means of a blood smear, due to the typical appearance of the bacteria. Carcasses of animals which have died of anthrax must be buried, with the addition of lime or Chlorine.

Anthrax is very widespread in Southern Africa and can affect cattle, sheep, goats, pigs and horses, as well as game species like kudu, zebra, buffalo, wildebeest and elephant. Kudu are specifically very susceptible to the disease. Outbreaks occur from time to time in the Etosha National Park, especially after the rainy season when small puddles of water contain very high concentrations of spores. In the 1970s an Anthrax epidemic decimated the Blue Wildebeest population from 30 000 to 3 000. Anthrax is also very dangerous for humans and this aspect will be discussed later under zoonotic diseases. Anthrax is a scheduled disease. Suspected cases must be reported to the state veterinarian and annual vaccination of cattle is compulsory by law. (See also vaccination programs). The vaccine consists of live attenuated anthrax spores. The vaccine is either available as a single vaccine like the Onderstepoort Biological Products (OBP) Anthrax Spore Vaccine or Anthravax (Intervet) or as part of combination vaccines like Blanthrax and Supavax (Intervet) or Doublesure Vaccine (OBP). The dose for

OBP Anthrax vaccine and Anthravax is 1 ml subcutaneously and for Blanthrax Supavax and Doublesure 2 ml subcutaneously. Wide spread compulsory vaccination over the years has significantly reduced the incidence of anthrax in live stock.

BOVINE BRUCELLOSIS - Brucellosis in cattle is caused by *Brucella abortus*, leading to widespread abortions in unvaccinated cattle. Abortions, which can result in severe economic losses, occur during late pregnancy (7 months). The disease can also cause the birth of very weak calves, which may die shortly thereafter and can cause a shortening of the lactation period. Humans can also be infected (see Zoonotic Diseases). Transmission occurs through contact with aborted foetuses, infected discharge from the uterus and the infected placenta or from the infected environment. Infected cows also excreted the bacteria in the milk and in the urine. The organism can survive for up to 8 months in an aborted foetus in the shade, 3 – 4 months in dung and 2 – 3 months in the soil.



in Gebortende fetus vervoer brucellose



dester doen gewoontlik brucellosebestemming op die tip of met van deestelike nagboorters, deestelike voor of gras en die brucellose water te drink

Prevention and control consists of compulsory vaccination of heifers with S19 vaccine between 3 and 9 months, annual serological testing of dairy cows and pasteurization of milk. This vaccine produced by OBP is a freeze dried suspension of live attenuated *Brucella* bacteria, and the dose is 5 ml administered subcutaneously.

Brucella melitensis occurs in sheep and goats and causes sporadic abortions or abortion storms and retained placenta, as well as Malta Fever in humans.

Brucella ovis occurs in sheep and causes infertility in rams due to infection of the epididymis.

A vaccine is available to control both *Br. melitensis* and *Br. ovis*. The vaccine, *Brucella* Rev 1 vaccine is produced by OBP and consists of a freeze dried preparation of live *Brucella melitensis* bacteria. It also provides an immunity against *Brucella ovis* infection. It can be used for sheep and goats, at a dose of 2 ml administered subcutaneously.

CONTAGIOUS BOVINE PLEUROPNEUMONIA (LUNGSICKNESS)

Contagious Bovine Pleuropneumonia (CBPP) or Lungsickness is a contagious infectious disease of cattle caused by *Mycoplasma mycoides*, which affects the respiratory system and causes pneumonia. It is a scheduled notifiable disease which occurs widely in northern Namibia. It is very difficult to control due to constant illegal movement of cattle into Namibia from Angola and results in severe economic losses. Economic losses are due to death and in cases where animals are chronically affected due to reduced fertility, loss of condition



"Marbled lung" due to CBPP

and quarantine measures preventing the marketing of the animals. Affected animals often die. Those that survive can remain carriers for a long time and spread the infection to susceptible cattle. Infection occurs by direct contact between a sick or carrier animal via droplets to a susceptible animal.

to continue on page 8...

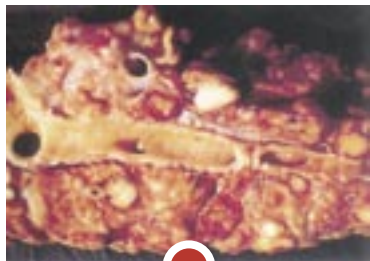
continued from page 6...

Symptoms: The incubation period can vary from 3 weeks to 3 months or longer. Cattle that have been in contact with sick animals can be regarded as infected for 6 months. A common symptom in calves is swelling of the joints due to a septic arthritis. These joints can remain swollen for months. Other symptoms include fever, listlessness and respiratory symptoms of grunting and coughing. These get worse with exercise. Affected animals do not want to move and stand with extended neck and head, and elbows turned out. There can be a frothy nasal discharge and frothy salivation. The mouth is often kept open and the tongue stretched out. Later animals develop subcutaneous swelling of the chest and abdomen and will emaciate. Affected animals die within 3 weeks after the onset of symptoms. Common post mortem findings include the marbled appearance of the lungs and sequester formation in the lungs. Prevention and control is through vaccination, movement control and movement restrictions quarantine and slaughter of affected animals.



Sequestrum formation in the lung

TUBERCULOSIS - Tuberculosis (TB) is a chronic infection that can affect nearly all vertebrate animals. Bovine tuberculosis is caused by *Mycobacterium bovis*, human tuberculosis by *Mycobacterium tuberculosis* and tuberculosis in birds by *Mycobacterium avium*. Humans are, however, also as susceptible to *M. bovis* as they are to *M. tuberculosis*. The disease, which usually has a very chronic course, is characterized by the formation of typical tubercles, caseous necrosis of tissue and progressive wasting away.



Generalised TB in the lung

Tubercles are small rounded translucent nodules of a grayish colour. Bovine tuberculosis as a zoonosis (see zoonotic diseases) is of enormous importance due to the danger it poses to humans. Bovine tuberculosis is controlled by the state veterinarian and involves annual testing of dairy cows used for commercial milk production. Due to the long

chronic course of the disease, tuberculosis can remain inapparent in an infected herd and will then present variable symptoms depending on the organ system affected. The disease primarily affects the lungs but can also cause mastitis and can produce tuberculous lesions in many other organs. Animals in advanced stages of TB are usually emaciated with a rough hair coat and may have enlarged lymphnodes. The disease can be diagnosed by post mortem examination and laboratory test or it can be detected in the live animal by a skin test. Positive animals are branded with a "T" brand and slaughtered in specified abattoirs.

Poultry, pigs, sheep, goats, horses and certain game species like buffalo and lion are also susceptible to TB and can cause a threat to human health.

Humans are mainly infected by drinking raw unpasteurized infected milk, as well as through direct or indirect contact with infected animals, through droplet inhalation, while working with animals, especially in intensive farming operations, like dairies. Direct contact between

affected and susceptible people also helps to spread the disease. Apart from the respiratory system, many other organ systems of humans can be affected. Humans suffering from starvation, malnutrition or from immune-suppressive diseases like HIV/AIDS, or living in crowded unhygienic poor housing conditions, are particularly at risk to contract TB. TB is seen as an index of poverty.

Prevention and control:

- Vaccination of humans.
- Pasteurization of milk.
- Annual testing of dairy cattle with intra-dermal tuberculin tests.
- Regular testing of dairy workers.
- Proper human nutrition and strict hygiene; elimination of poverty.
- Elimination of immune-suppressive diseases like HIV/AIDS.

This article on scheduled diseases will continue in the July issue of RING with feature articles on diseases such as Rabies, Foot & Mouth disease, to mention a few.

Dr Rainer Hassel
Agra Animal Health Consultant

PMP IS 70
JARE JONK



KNOW YOUR PRODUCT



Vir dekades al is Pretoria Metaalperswerke (of PMP soos dit reg oor die wêreld bekend is) sinoniem met wêreldgehalte jagammunisie. Tog is daar baie meer om die lyf van hierdie trots Suid-Afrikaanse maatskappy as slegs jagammunisie.

Agra is 'n verspreider van PMP se jagammunisie sedert die sewentigerjare, en is tans die verspreider wat hierdie uitstekende Suid-Afrikaanse ammunisie die langste hanteer.

PMP vier hierdie jaar sy 70ste bestaansjaar, en ons het gesels met Carel Wolhuter, wat reeds die afgelope 12 jaar Hoofbestuurder is. Die jagtersgemeenskap lê naby aan Carel se hart. Hy is in 2000 vereer met 'n Presidentstoekening vanaf die S A Jagters- en Wildbewaringsvereniging, en ontvang in 2007 'n verdere toekening vir ondersteuning van die S A Jagter.

Hier is wat hy te sê het:

PMP se wortels gaan terug na 1934 toe die eerste eksperimente in die vervaardiging van ammunisie begin het as deel van die ou Royal Mint in Pretoria. Produksie het in 1938 begin, dus nou 70 jaar gelede.

Gedurende die Tweede Wêreldoorlog, het meer as 45% van die Geallieerde Magte se .303 ammunisie vanaf Suid-Afrika gekom, 'n verstommende 768 miljoen rondtes!

to continue on page 10...

continued from page 8...

Na die Wêreldoorlog het PMP ook hoë gehalte handwapen- en jagammunisie begin vervaardig. Vandag staan sy Standaard, PRO-AMM en Superreekse hulle man tussen die top echelons van jaggrondtes.

Suider-Afrikaanse jagters is soms geneig om te dink dat duur ingevoerde ammunisie beter is. Ek dink met 'n glimlag wat Diethelm Metzger (President van die Namibiese Professionele Jagtersvereniging) aan my vertel het. 'n Jagter vanaf die VSA het by hom kom jag, en gemeld dat hy sy eie ammunisie saambring, en nie met enige ander wil skiet nie. Tot Diethelm se verbasing, haal die man sy PRO-AMM .300 Win Mag uit – gekoop in die VSA!

Terug na die geskiedenis van PMP. In die 1960's skuif vervaardiging na 'n nuwe perseel in Pretoria-wes. 'n Giet- en Walsaanleg (wat vandag tot 80 ton koperstrook per dag vervaardig) is in die 1970's bygevoeg, en is op 28 April 1977 deur die destydse Minister van Verdediging, P W Botha, geopen.

As gevolg van die onversadigbare vraag na ammunisie veroorsaak deur die Namibiese Grensoorlog, is 'n meer moderne aanleg laat in die 70's op 'n 400 hektaar perseel op die plaas Elandsfontein ten weste van Pretoria opgerig. Behalwe die Giet- en Walsaanleg, het alle aktiwiteite na die nuwe perseel geskuif gedurende die tagtigerjare.

PMP is ook 'n wêreldleier in die vervaardiging van medium kaliber ammunisie (vanaf 20 – 35 mm) wat in wapenstelsels van helikopters, vevliegtoe en lugafweerkanonne gebruik word.

Vandag word PMP se klein- en medium kaliber ammunisie aan die S A Weermag, S A Polisie en verskeie oorsese lande verkoop, en voldoen aan die strengste internasionale militêre en SAAMI standaarde. Die maatskappy vervaardig ook kommersiële plofstof, boorpunte vir die mynbedryf en ontsnapstelsels (vuurpilmotore en kragpatrone) vir vevliegtoe en helikopters.

PMP speel 'n belangrike rol in die jagbedryf. Sy streeks PRO-AMM groeperingskompetisies is baie gewild (soos nou weer baie suksesvol deur **Safari Den** aangebied tydens Outjo se Wildsfees). Ongelooflike klein groeperings van selfs 3 en 4 mm word dikwels behaal, 'n bewys van hoë akkuraatheid. Dit is interessant dat oor baie jare en duisende teikens wat geskiet is, het die .308 uitgestaan as inherent die akkuraatste rondte oor 100 meter.



Dankie aan Carel Wolhuter vir hierdie oorsig oor 'n wêreldklas maatskappy. Hy wil nie nou te veel bekend maak nie, maar erken dat PMP ver gevorderd het om 'n "elite" jagreeks op die mark te sit, eers net in 4 geselekteerde kalibers (.308, .30-06, .300 Win Mag en die .375).

(R)



KARAKUL

NUWE HOOGSTE PRYS

VAN N\$ 1396 VIR TOP LOT

Van die aanbod van 79 653 Swakara pelse is 100% op 10 April 2008 deur Agra in Kopenhagen, Denemarke verkoop. 'n Gemiddelde prys van 256.99 Deense Krone (DKK) is behaal, wat 'n daling van 3.94% verteenwoordig, teenoor die DKK 270.13 wat in September 2007 behaal is. Ten spyte van die daling in Krone was daar 'n styging van 9% in US\$. Die US\$ prys was 55.0 teenoor die US\$ 49.6 van die vorige veiling. Dus kan die daling in Deense Krone grootliks aan die swak vertoning van die US\$ teenoor die Krone toe geskryf word.

Die gemiddelde prys in Namibiese dollar van NAD 422.08 toon 'n styging van 19.34% teenoor die NAD 353.69 van die vorige veiling. Die aanbod het bestaan uit 69 208 swart, 461 grys, 5 455 wit, 377 bruin en 4 152 diverse pelse. Die hoogste prys van N\$ 1 396.04 (DKK 850), is betaal vir 'n pakkie van 52 D



Lig Lyre Uitsoek Super pelse en is gekoop deur Bourtsos Konstantinos van Siatista, Griekeland. Dit is die hoogste prys nog ooit in N\$ betaal. Die vorige hoogste van N\$ 1 250 was in April 2006 betaal. September 2007 se hoogste prys in NAD was N\$ 667.74

Die pelse is deur 35 kopers gekoop met ander wat aktief gebie het maar onsuksesvol was. Die grootste kopers was die agente uit England met Japan tweede en Italië derde. Die koper van Japan was weereens die

grootste enkele koper. Kopers uit Duitsland, VSA, Suid Korea, Hong Kong, Griekeland, Denemarke en Israel het ook aan die veiling deelgeneem.

Die inspeksie voor die veiling was bedrywig soos gewoonlik wat toon dat Swakara nog in aanvraag is. Die grootste daling (teen ons verwagting) het by die vlak tipes voorgekom met 'n styging in veral die ontwikkelde tipes. Kopers skryf dit toe aan die dubbelkleur tegniek wat nou weer in aanvraag is en die ontwikkelde pelse is ideaal daarvoor.

Die top Namibiese produsent (met meer as 250 pelse) vir hierdie veiling is Giel Karsten van Karasburg wat 574 pelse teen gemiddeld NAD 590.01 verkoop het met die top RSA produsent Will Louw van Kakamas wat 268 pelse verkoop het teen gemiddeld R 558.24



GOEIE PRYSE BEHAAL OP AGRA SE

KATALOGUS WILDVEILING

Tydens die jaarlikse wildveiling wat op Saterdag, 3 Mei deur Agra by Outjo aangebied is, het kopers hulle hande diep in die sak gestee om van die gesogte wildspesies te bekom. Die totale omset van die veiling was N\$ 3.4 miljoen vir die 769 stuks wild, wat uit 'n aanbod van 837 van die hand gesit is.



Die grootste koper van die dag was Kurzbach Von Seydlitz van die plaas Schönfeld wat vir meer as N\$ 600 000 wild gekoop het vir hervestiging op sy plaas naby Omaruru.

Die hoogste prys vir 'n enkele Bastergemsbok was N\$ 110 000, terwyl Sables en Tsessebes vir onderskeidelik gemiddeld N\$ 45 000 en N\$ 21 000 verkoop is.

Die veiling wat deur Agra aangebied is, word as 'n groot sukses bestempel.

PRYS GEMIDDELDES

Beskrywing	Verkoop	Gemiddelde N\$ Prys (BTW uitgesluit)
Swartwildebees	60	3 691.00
Blesbok	105	2 157.00
Blouwildebees	50	2 950.00
Burchell Sebra	30	7 016.00
Eland	44	5 329.00
Kameelperd	9	11 500.00
Hartman Sebra	40	5 550.00
Impala	70	2 085.00
Kudu	21	2 714.00
Nyala	24	11 375.00
Gemsbok	30	2 466.00
Volstruis	20	1 875.00
Rooihartebees	52	2 280.00
Rooi Lechwe	10	12 000.00
Bastergemsbok	3	110 000.00
Sable	4	45 000.00
Springbok	150	1 953.00
Tsessebe	5	21 000.00
Waterbok	42	8 785.00



MEESTERAKKERBOUERDAG

SUKSESVOL AANGEBIED

Op Donderdag 17 April 2008 is die Meesterakkerbouerdag onder die tema, "Bewaringsakkerbou" op die plaas Frauenlop van Louis Steyn in die Grootfontein distrik deur die Akkerbou Produsentevereniging in samewerking met die Akkerbouraad aangebied. Agra was een van die borge van die dag en is verteenwoordig deur verskeie amptenare.

Hierdie is 'n jaarlikse instelling en een van die hoogtepunte op die kalender van Akkerbouers in Namibië. Die geleentheid word gebruik om die Meesterakkerbouer in die droëland- en besproeiings katagorie te kroon. Hierdie jaar het die eer Louis Steyn (droëland) en Richard Himmel (besproeiing) en sy span onder leiding van Hannes Arangies van Namfo buitekant Tsumeb te beurt geval. Die dag is deur ongeveer 130 mense van reg oor die land bygewoon.

to continue on page 12...

continued from page 11...



Belangstellendes kyk na 'n profielgat in die mielielande van Louis Steyn.

Egon Zunckel, 'n boer van die Bergville distrik in Kwa-Zulu Natal het as gasspreker opgetree. Hy het 'n baie interessante lesing aangebied oor sy boerdery praktyke. Hy be-oefen al vir die laaste 15 jaar geenbewerking- en bewarings praktyke op sy plaas waar hy hoofsaklik met mielies, koring en bone boer.

Die dag het afgeskop met die Algemene Jaarvergadering van die Akkerbou Produsente-vereniging. Hierna het Oliver Horsthemke van Eerste Nasionale Bank as openingsspreker opgetree. In sy toespraak het hy gefokus op ekonomiese vooruitskouings met spesifieke verwysing na die Landbou.

Hierna is die trofee en sertifikate aan die twee meesterakkerbouers oorhandig waarna hulle elkeen 'n beurt gekry het om oor hulle boerdery suksesse te gesels. Die borge van die dag het ook 'n geleentheid gekry om 'n borgtoespraak te lewer. Kobus Jacobs het Agra verteenwoordig en aan Akkerbouers die versekering gegee dat Agra alles in hulle vermoë doen om in die tyd van stygende koste en produk tekorte die beste moontlike pryse en beskikbaarheid van produkte te verseker.

Hierna is 'n besigtigings toer op die plaas van Louis Steyn aangebied wat ook die volgende oggend uitgebrei is met 'n besoek en besigtigingstoer aan Namfo. Die dag is met 'n heerlike braai en saamkuier afgesluit.



Jorg Reinard Otto, meesterakkerbouer droëland 2007 oorhandig die trofee aan Louis Steyn.



INTEGRATED FARMING

ROOFDIERE OP VEEPLASE IN NAMIBIË

DEEL 2 - DIE IDENTIFIKASIE VAN DIE EINTLIKE VEEDODERS IS BELANGRIK

Die feit dat 'n voël of soogdier gesien word terwyl dit aan 'n karkas vreet, beteken nie noodwendig dat daardie betrokke dier ook die jagter van die gevrekte dier was nie. Baie roofdiere is ook aasvreters en daar is altyd 'n bepaalde hoeveelheid van voël- en soogdierspesies in dieselfde gebied wat terselfdertyd jag en aas vreet. 'n Roofdier wat vee jag is nie 'n spesie nie, maar 'n individuele dier binne die verband van sy spesie. Territoriale diere van enige spesie hou ander lede van hulle eie spesie uit hulle gebied uit. Verskillende roofdierspesies wat in een gebied voorkom jag ook mekaar, en as die een spesie totaal verwyder is neem die ander roofdierspesie se getalle toe.

Roofdiere maak jag op 'n groot verskeidenheid prooi en beheer die bevolkingsgetalle van insekte, knaagdiere en ander plantetende plaagspesie. Roofdiere slaan op swak en sieklike individue toe en aasvreters maak verrottende karkasse van kant. Hulle altwee verminder die verspreiding van siektes in die land.

Lê veral klem op die ondersoek van die slagtingsplek en die oorblyfsels van die vee.

Kyk na die spore. Katspore het 'n dubbele inkerwing (in die vorm van 'n "w") aan die onderkant van die hoofkussinkie.

Katspore toon geen kloumerke nie, behalwe in die geval van 'n jagluiperd. Alle katspesies laat kloumerke op 'n karkas agter. Die spore van 'n hond, vos, jakkals en hyena het 'n reguit onderkant aan die hoofkussinkie wat ook skuins kan staan.

<p>Wildehond (B) 56-65mm (L) 75-80mm RV RA 48-55mm (B) 68-82mm (L)</p>	<p>Huishoudelike hond RV RA Die spore kan in grootte totaal verskil</p>	<p>Strandwolf 85mm (L) RV 66mm (L) RA</p>	<p>Tierwolf Gevlekte hiëna (B) 89mm (L) 92-105mm RV RA Die agterste spore is ietwat dunner en langer as die voorste spore</p>	<p>Groekat (B) 30-35mm (L) 30-35mm RV RA (B) 30-35mm (L) 30-35mm</p>	<p>Leeu (B) 110-130mm (L) 90-120mm RV RA Die agterste spore is ietwat dunner as die voorste spore</p>
<p>Luiperd (B) 65-90mm (L) 65-90mm RV RA (B) 60-80mm (L) 80-100mm</p>	<p>Jagluiperd (B) 75mm (L) 85mm RV RA Die agterste spore is ietwat dunner en langer as die voorste spore</p>	<p>Rooikat (B) 50-55mm (L) 50-55mm RV RA (B) 42-48mm (L) 45-50mm</p>	<p>Rooijakkals Vanjakkals/ Witwasjakkals (B) 40mm (L) 54mm RV RA (B) 32mm (L) 43mm</p>	<p>Silwerjakkals (L) 38-40mm RV RA Die agterste spore is ietwat dunner as die voorste spore</p>	<p>Mense</p>

to continue on page 13...

continued from page 12...

Die grootte van die prooi kan help om die grootte van die roofdierspesies te bepaal. Die doodsblyt en die wydte daarvan (die mates tussen die hoektande) kan die beste aan die binnekant van die vel gesien word. Die gedeeltes van die prooi wat deur die roofdier opgevrete word en die oorblyfsels van die karkas verskil by elke roofdierspesie.

Ontvel en ondersoek die prooi om vas te stel of dit deur 'n roofdier doodgemaak is of net deur aasvreter opgevrete is!

Kyk vir kneusings deur die karkas te ontvel. Min of geen kneusplekke beteken dat die dier dood of amper dood was voordat die roofdier gearriveer het.

Begin om die vel vanaf die nek af te trek, 'n handbreedte agter die oor. Verwyder die vel rondom albei kante van die keel en kyk vir kneus- en bytmerke. Ontvel die hele karkas en kyk vir kneus- en bytmerke. Maak die luggyp oop om vir skuim te kyk. Skuim in die luggyp beteken dat die dier nog asem gehaal het voordat dit verwurg is.

Kyk of 'n nuutgebore dier deur 'n roofdier doodgemaak is, of reeds doodgebore was en net sy karkas deur aasvreter opgevrete is.

Kyk na die hoewe, ongeskonde hoefmembrane dui daarop dat die diertjie te swak was om te staan en te loop, of doodgebore was. Ondersoek die longe, 'n donkerrooi kleur dui aan dat die dier doodgebore was en nie asem gehaal het nie. Ondersoek die derms, as daar geen gestolde melk in is nie, het die dier nie gedrink nie. Ondersoek die hart en niere, wit vet rondom hierdie organe dui op 'n gesonde dier.

In deel 3 van ons reeks oor "roofdiere op veeplase" sal u meer kan lees oor die mees algemeenste soog- en roofdiere van vee in Namibië. Hierdie artikel sal dus in die Julie uitgawe van die Ring verskyn.

Liz Komen-Narrec

easier, thus his strictness on hair quality.

As his knowledge developed, he became one of the greatest practical students of Karakul. He not only summed up the art of Karakul breeding quicker than anyone else, but was also drastic and revolutionary for his time.



For the observer it appeared that he did not leave the back door open in case something went awry. On one of his overseas journeys, a well-known scientist put it to him that if he should continue to develop the Shallow Curl and Watered Silk pelts, it would most likely lead to stillborn lambs.

With the opposition he encountered regarding his breeding direction, one of his superiors advised him to rather give up his ideas. Why should he put his position in jeopardy and lose his job? With tenacity and determination however, he continued with the programme.

During his final years he tasted victory with the recognition from his friends and opponents for his dedication to his work of 34 years. Where in his early years he had been the most controversial figure in Karakul breeding circles, he was now held in high esteem, if not loved. The question was posed whether the advantage provided by him to Karakul breeding would be preserved – and indeed it was. He wrote a booklet 'Karakul Sheep'. This work must be appreciated against the background of the time in which it was written. It was a testimony to his versatility, observation, ability and ideas. He engraved himself forever into the art of Karakul breeding. He was a humble and loving man, but also had the fire of a dragon.

A D Thompson died on 5 July 1960 at the age of 70".

This is an extract of the book "Karakul – Gift from the Arid Land 1907 – 2007" written by Brenda Bravenboer and Special Advisor Berndt von Kunow. The book is available at the Karakul Board (Tel nr 061-290 9213).

A D Thompson is today regarded as the "Father of Swakara" and for this reason the Karakul Board in recognition of his exceptional contribution awarded (posthumous) the Golden Lamb to him at the centenary celebration in Keetmanshoop in September 2007. During a meeting held on 27 March 2008 the award was handed over to Douglas (A D) Thompson, grandson and Jenny Spangehl, granddaughter of late A D Thompson by Kobus van Wyk, Chairperson of the Karakul Board of Namibia.



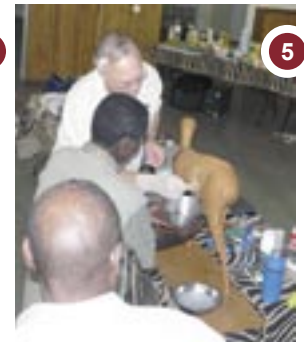
KARAKUL "GOLDEN LAMB"
PRESTIGIOUS
AWARDED TO "FATHER OF SWAKARA"

On occasion the Karakul Board of Namibia grants a most prestigious award (Golden Lamb Award) to individuals or jointly to any person or institution that exerted him or herself in an exceptional manner for the promotion and extension of the Karakul industry.

"Such is the case with Mr A D Thompson, who was only equipped with knowledge of Merino sheep and Angora goat breeding when he was put in charge of the Government Stud soon after South African occupation of German South West Africa in 1915. According to him, the knowledge of the latter made the task much

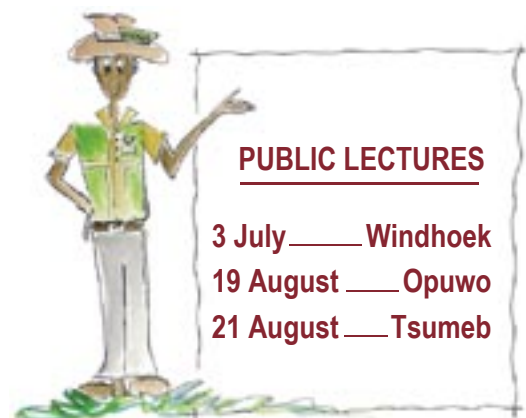
Die Agra inligtingsdae fokus op opkomende- en beginner boere. Onderwerpe wat bespreek word sluit in: bemerking van diere deur Agra-veilings, aanvullings van diere, geïntegreerde boerdery met roofdiere;

die gebruik van die veeartseny-eerstehulpkas en basiese eerstehulp en gesondheidsorg vir vee. Belangstellendes kan vir Adelheid Mouton by telefoon 061-290 9335 skakel vir meer besonderhede.



Die fotobeeld van die vier inligtingsdae wat Agra reeds aangebied het van bo links:

1. Pieter Hugo gesels oor bemerking deur Agra-veilings; 2. deelnemers aan die eerste inligtingsdag in Windhoek; 3. Gunther Roeber van die CCF wys een van die modelle aan Peter Kazmaier en Minister Nangolo Mbumba; 4. Clara Bohitile tree op as seremoniemeester in Windhoek; 5. behandeling van 'n abses word gedemonstreer in Grootfontein deur Dr. Rainer Hassel; 6. deelnemers in Grootfontein; 7. deelnemers met die bekendstelling van die eerstehulpkas saam met Bank Windhoek se personeel in Keetmanshoop; 8. 'n deelnemer spreek sy waardering uit vir Agra se insette; 9. aanvullings vir diere deur Gunther Roeber en Jeftha Karipata van Voermeester; 10. die veeartseny-eerstehulpkas word gedemonstreer in Keetmanshoop; 11. Danie de Lange van Voermeester en 'n uitstalling van voere in Keetmanshoop; 12. Annemarie Stewart van CCF gesels met deelnemers in Gobabis oor bewaring van die jagluiperd; 13. Kiep Lepen van Agra gesels met deelnemers in Gobabis

PUBLIC LECTURES

3 July _____ Windhoek
 19 August _____ Opuwo
 21 August _____ Tsumeb

