

APRIL 2010 APRIL

AGRA CO-OPERATIVE LTD MEMBERS' NEWSLETTER

AGRA KOÖPERATIEF BPK SE LEDE NUUSBRIEF



AGRA NEWS

SUKSESVERHALE

VAN AGRA SE INTERNETVEILINGS

Die opwinding van bemarking deur die internet neem daagliks toe soos Agra se e-Auctions momentum kry.

Veno Kandinda kan hiervan getuig nadat hy die grootste transaksie nog beklink het op Agra e-Auctions deur 82 speenkalwers aanlyn te verkoop.

"Dit was 'n wonderlike ervaring om my diere deur die internetveilings te bemark. Ek het die prys gekry wat ek wou hê en my diere was op veiling terwyl hulle rustig op my plaas gewei het", het Kandinda gesê. Hy was ook baie tevrede met die feit dat die diere die oggend op die trok gelaai is en op dieselfde dag reeds by hul bestemming uitgekom het. Daar is baie gespaar op tyd, die druk op die diere was baie minder en hy het baie gespaar op vervoerkostes.

Nog 'n boer, Noel van der Hooven, stem saam dit is 'n baie gemaklike en eenvoudige konsep van besigheid doen as jy eers vertrou is met die konsep. Hy het 'n Boerbokram deur e-Auctions verkoop. Shaun Louw, 'n deelydse boer van die plaas Goabibgous naby Rehoboth, was die koper van die ram. Hy is ook baie ingenome met die feit dat hy die "veiling kon bywoon" terwyl hy eintlik in Swakopmund is. "Die proses was baie doeltreffend, ek is baie tevrede met hierdie diens en ek sien uit daarna om ook my eie diere deur e-Auctions te bemark in die toekoms", was Louw se kommentaar oor sy koopervaring.

Nog Namibiese boere wat die gerief van e-Auctions ervaar het is Mnr Ivan Hjarunguru, wat in Windhoek werk en deelydse in die Grootfontein area boer. Hy het sy hart op bul WSO 06196 gesit wat hy op e-Auctions gesien het. Omdat hy voltyds werk en nie veilings kan bywoon nie, kon hy deur die klik van sy rekenaar die trotse eienaar word van die bul. Hy het genoeg tyd gehad om die bulle se teelwaardes te bestudeer en te bepaal watter bul by sy boerdery behoeftes sal pas.

'n Besige mediese algemene praktisyn in Windhoek wat ook deelydse boer in die Okahandja area se oog was op WSO 06080 en hy het besluit hierdie bul gaan Okaipuro Nord toe. Deur aan die e-Auctions deel te neem het Dr Danie Jordaan dus ook sonder baie moeite en tyd die nuwe eienaar geword van hierdie Wit Brahmanbul.

Beide hierdie bulle is deur Wiruru Brahmanstoet op Agra e-Auctions verkoop en is alreeds by hulle nuwe eienaars en die bulle is besig met die werk waarvoor hulle aangekoop is.

Nog onlangse hoogtepunte vir Agra e-Auctions en die Wiruru Brahmanstoet van die plaas Okowiruru-Nord in die Omaheke-streek, was dat die grense gebreek is deurdat diere van hierdie plaas verkoop is aan 'n teler van die plaas Arnut Hill naby Ladysmith in Kwazulu-Natal.

Hierdie teler het 'n bul en 5 verse gekoop nadat hy ook aan die veiling op internet deelgeneem het. Deur besoek af te lê by www.agrauctions.com.na het hy die diere se teelwaarde bestudeer op "Breedplan", wat op elke stoetveiling op e-Auctions beskikbaar is en daarvolgens besluit om hierdie diere by sy stoet by te voeg. Goeie teelwaarde het geen grense nie en e-Auctions is die beste manier om kwaliteit diere op die internasionale sowel as die plaaslike mark beskikbaar te stel. Hierdie bulle is van die veld af verkoop en die 2 weke wat hulle op die veiling was, was hulle nog steeds op die veld. Vir die verkoper sowel as die koper is dit nou onontbeerlik om daagliks 'n draai te maak by e-Auctions en hulle moedig ander boere aan om elke dag by e-Auctions 'n draai te maak, want veilings is daagliks vir 24uur aan die gang.

Onthou: E Auctions is nie net vir stoetdiere nie maar vir alle lewende hawe, eiendom, losgoed en enige iets wat u wil koop of verkoop.



Veno Kandinda, tevrede dat hy slegs sy diere een maal hoef te vervoer.



Shaun Louw, nuwe eienaar van die bokram wat hy deur e-Auctions gekoop het.



Die bulle en verse van Wiruru Brahmanstoet wat deur e-Auctions verkoop is.

Die bladsye van hierdie uitgawe van die Ring kan 'n mens maklik laat dink aan die spogboek van 'n trotse ouma. Opskrifte soos "suksesverhale", "PMR Awards", "Veilings uit die boonste rakke", gee 'n mens 'n warm gevoel om die hart. Foto's en advertensies wat getuig van suksesvol afgehandelde geleenthede en projekte en toekomstige aktiwiteite, gee 'n mens weer die gevoel van "hier gebeur dinge".

Inderdaad gebeur baie dinge elke dag, in en om Agra. Met die skryf van hierdie artikel is ons in die pylvak om tweederdes van ons lede se toestemming te kry om voort te gaan met die omskeppingsproses. Namibiërs het ons land se twintigste verjaardag gevier en die nuwe parlamentslede is ingehuldig. Ons vertrou dat die toekoms vir Namibië, soos die verlede, die gunstige omstandighede sal bied om optimaal te produseer en vordering te maak op ons pad na Visie 2030.



Tydens die toekenningsereemonie waar Agra vyf PMR-toekennings ontvang het (sien artikel hiernaas), het die gasspreker, Dr Arnold Smit, van die Universiteit van Stellenbosch, beklemtoon dat dit nie net finansiële welvaart is wat belangrik is nie, maar dat volhoubare besigheid slegs moontlik is in 'n gesonde omgewing en 'n gesonde gemeenskap.

'n Paar belangrike, en kommerwekkende feite wat Dr Smit uit Jonathan Porritt se boek "Capitalism as if the world matters" aangehaal het is:

- soos die wêreld huidig daar uitsien, benodig die aarde 1,3 jaar om te hernuwe of te verplaas wat ons in 12 maande verbruik.
- As die hele wêreld sou leef soos ontwikkelde nasies in die noordelike halfrond, sou ons drie planete soos planeet Aarde nodig hê om die huidige wêreldpopulasie te onderhou
- Teen die huidige populasie-aanwas sal ons teen 2050 'n wereldpopulasie hê van 9,6 biljoen wat gevoed sal moet word vanuit hulpbronne wat op hierdie stadium reeds uitgeput is.

Ons as Namibiërs moet beseft dat elkeen van ons verantwoordelik is vir die welstand van ons gemeenskap en ons omgewing. Ons vertrou dus ook dat die voortgesette insette van organisasies soos Agra ook die Namibiese gemeenskap sal motiveer en toerus om volhoubaar te produseer. Daarom glo ons ook dat die tegniese artikels in die Ring en Agra se nuwe Professionele Dienste Afdeling van groot waarde is. Ons bly trots op ons voorgesette insette as korporatiewe, sosiale burger. Ons weet dat die veranderinge wat Agra beoog tot voordeel sal wees. Ons glo dat Agra, met die volgehoue ondersteuning van ons lede en kliente, asook Namibië sal bly groei, nie net in welvaart, maar as verantwoordelike rentmeesters van Moeder Aarde.

Groete tot die volgende uitgawe

Albé Snyman
Kommunikasiebeampte
Privaatsak 12011, Windhoek
Tel: 061-290 9273 • E-pos: albes@agra.com.na

Agra Hoofkantoor Tel: 061-290 9111



AGRA NEWS

FIVE PMR AWARDS

FOR AGRA

Five PMR awards in the section of competitive business sectors is a great feather in the cap of Agra. Agra received two Diamond Arrow Awards for excellence in the Livestock division and as fertilizer supplier. For excellence as seed cultivar providers and suppliers of agricultural equipment Agra received Golden Arrow Awards. In these four divisions Agra was first overall. In the division for tractor and farming implement dealerships Agra received a Silver Arrow Award, second to Hochland Tractor Centre.

PMR, or Professional Management Review, does an annual national survey on Namibia to profile Namibia as a growth point and potential investment area for foreign and local developers and investors. They do the survey to measure companies, institutions, Government entities and individuals on their contribution to the economic growth and development of the country, levels of management expertise, corporate governance, competencies and brand awareness. The ratings are based on the perceptions of the respondents. In Section 1, for competitive business sectors, respondents had to nominate and rate companies and institutions doing most to stimulate the economic growth and development of Namibia and who have demonstrated exceptional managerial and corporate governance qualities during the same period.

At the award ceremony, the keynote speaker was Dr. Arnold Smit, Programme Director at the Centre for Business and Society at the University of Stellenbosch. In his speech, he highlighted the importance of responsible leadership and sustainable business. As he stated, human greed depleted reserves in the financial systems and the biosphere and that we cannot continue with current practices. In order to feed a growing world population, we need continued economic growth without depleting the resources further. He said that prosperity is not only measured in financial terms but also in social and environmental terms. "Sustainable development is only possible in a healthy community and a healthy environment. We are each responsible", said Dr Smit.

Agra's continued growth and its efforts to contribute as a corporate citizen towards development and productive but sustainable use of resources make Agra a worthy winner of these awards.



PMR awards: Danie Byleveld, Manager: Livestock and Arnold Klein, General Manager: Retail and Wholesale, with the Golden Arrow and Silver Arrow Awards.



AUCTIONS

AGRA DORPERVEILINGS

UIT BOONSTE RAKKE

Twee Dorper-stoetveulings wat deur Agra in die Suide gehou is het getoon dat hierdie ras stewig en trots in Namibië gevestig is en van krag tot krag gaan. By die streeksveulings in Koës en Aranos, was die diere wat aangebied is, van uitstaande gehalte, baie kopers het gebie en goeie pryse is behaal. Veertien telers van Wit Dorper en Dorper het stoetdiere by die veiling in Koës aangebied terwyl agttien telers hul diere by die veiling in Aranos verkoop het.

By die Dorper-streeksveiling in Koës, is 50 ramme verkoop vir 'n gemiddeld van N\$4 295. Die duurste ram was van Hoogvertoon Wit Dorper Stoet en is verkoop vir N\$12 500 aan JP von Wielligh van Aroab. By die Aranos Dorper-streeksveiling het 49 kopers geregistreer om te bieb op die 64 ramme en 5 ooe wat aangebied is. Die ramme het verkoop vir 'n gemiddeld van

N\$7 313 en die ooe vir N\$2 620. Die ram wat die hoogste prys behaal het is deur Philip Strauss verkoop vir N\$30 000 aan Francois Theron van Windhoek terwyl die tweede duurste ram deur Danie Visser Dorpers verkoop is vir N\$ 24 000 aan PJ Joubert van Stampriet.



“Agra is trots om geassosieer te word met die Dorpertelers in Namibië en die vertroue wat hulle in ons stel om hul diere te bemark. Hulle is toegewyd aan hierdie ras en die kwaliteit van hulle diere is ‘n tasbare bewys daarvan”, was Danie Byleveld, Agra se Bestuurder: Lewende hawe se gevoel oor die suksesvolle veulings.

Francois Theron, Philip Strauss en Agra se afslaer, Eddie Reed met plaasbestuurder Johan van Rooyen wat die Dorper ram van N\$30 000 vashou.



AUCTIONS

KLEINVEEKOPERS KRY GRATIS DIERE

OP DIE KOOP TOE

Om goeie genetiese materiaal te koop en op die koop toe gratis diere te kry, is nie iets wat elke dag met 'n boer gebeur nie. By 'n veiling van Kobus van Wyk en Francois en Wallace Theron aan die einde van Februarie in Windhoek, het drie kopers wat die grootste aankope gedoen het in drie kleinveerasse, hierdie bonus te beurt geval. Die pryse, 'n van Rooy ram, 'n Wit Dorper ram en 'n Boerbokooi, is geskenk deur die telers,

Kobus van Wyk en Francois en Wallace Theron in samewerking met Corporate Guarantee.

Mr Hans von Hase het die grootste aankoop gedoen van van Rooy diere en het 'n van Rooy ram van Francois Theron gewen. Mnr Manfred Izaaks het die meeste spandeer op die aankoop van Dorpers en het 'n Wit Dorper ram op die koop toe gekry. Die ander gelukkige wenner was Mnr B Rhodes wat 'n Boerbokooi gewen het vir die grootste aankoop van Boerbokke.



Kobus van Wyk en B Rhodes, wenner van die Boerbokooi



Manfred Izaaks (links), gelukkige wenner, saam met Susan v.d. Merwe van Corporate Guarantee en Wallace Theron wat die Dorper ram geskenk het.



Hans von Hase (regs) het die van Rooy ram gewen. Op die foto ontvang hy die ram van Ronel Theron.



AUCTIONS

STOETVEEVEILINGS

UITSLAE

26 Februarie 2010 Produksieveiling van Kobus van Wyk, Francois & Wallace Theron

Beskrywing:	Gemiddelde Prys: (N\$)	Hoogste Prys: (N\$)
15 Dorper Ooie	816.67	1 100.00
7 Dorper Ramme	3 071.43	3 250.00
21 Boerbok Ooie	2 964.29	6 750.00
13 Boerbok Ramme	6 096.15	8 500.00
8 Wit Dorper Ramme	1 500.00	1 500.00
34 Van Rooy Ooie	697.06	1 000.00
44 Van Rooy Ramme	3 137.50	5 750.00

Die duurste ram was 'n Boerbokram van Kobus van Wyk wat vir N\$ 8 500.00 verkoop is aan H C Payne, Otavi.

5 Maart 2010: Sandveld Navorsingstasie:

Beskrywing:	Gemiddelde Prys: (N\$)	Hoogste Prys: (N\$)
3 Braunvieh Verse	3 650.00	3 750.00
10 Damara Ramme	382.00	420.00
8 Sanga Bulle	21 750.00	39 500.00
12 Sanga Koeie	4 729.17	6 300.00
54 Sanga Verse	4 425.93	8 100.00

Die duurste bul is gekoop deur Eva-Schmidt von Wuhlisch vir N\$ 39 500.00.

12 Maart 2010: Uitkomst Navorsingstasie:

Beskrywing:	Gemiddelde Prys: (N\$)	Hoogste Prys: (N\$)
6 Braunvieh Bulle	12 683.33	20 000.00
1 Simbra Bul	6 300.00	
15 Simmentaler Bulle	22 053.33	40 500.00
19 Simmentaler Koeie	4 073.68	5 500.00
10 Simmentaler Koeie met kalwers	5 060.00	5 600.00
5 Simmentaler Verse	3 660.00	4 000.00

Die duurste bul is gekoop deur Poen Prinsloo van Grootfontein vir N\$ 40 500.00.



AGRA NUUS

AGRA HOU EERSTE BOERDERY-INLIGTINGSDAG IN OSHAKATI

“Ek is dankbaar om te sien dat Agra geantwoord het op die versoek van die plaaslike boerderygemeenskap om kennis en ondervinding rakende verbeterde lewende hawe produksie te deel.” So het Agbare Lotte Kuushomwa, Streeksraadslid van Oshakati West Constituency Agra bedank tydens die amptelike opening van Agra se eerste boerdery-inligtingsdag op Vrydag, 26 Februarie. Die dag is aangebied by die Oshakati Lewende hawe sentrum waar gereelde lewende hawe veilings deur Agra aangebied word.

Gunther Roeber, 'n tegniese adviseur van Agra se Professionele Dienste Afdeling, het 'n reeks visuele lesings aangebied oor belangrike beginsels van lewende hawe produksie- en bemarking. Boere is ingelig rakende die potensiaal van lewende hawe produksie en die vereistes om dit te kan bereik. Dit het onderwerpe ingesluit soos doeltreffende kudde-en weidingsbestuur, dieregesondheid-en voeding asook bemarking van lewende hawe.

Deelnemers het ook die geleentheid gehad om praktiese oefening te kry in die maak van mineraallekkblokke met rou materiaal geborg deur Voormeester. Na die oefening kon deelnemers die produkte neem vir hul diere.

Pieter Hugo, Bestuurder: Professionele Dienste het ingestem dat dit 'n waardevolle aanbieding was en het die versekering gegee dat Agra sal voortgaan om sulke lesings aan boere te bied.

Die openbare lesings vorm steeds deel van Agra se sosiale betrokkenheid met die voordeel dat Agra self oor die kundigheid beskik om die inligting en vaardighede met boere te deel.



Deelnemers met hul gratis monsters na die meng van die lekkblokke



Pieter Hugo oorhandig 'n blyk van waardering aan Agbare Lotte Kuushomwa



AGRA NEWS

BP UIT NAMIBIË

Na 'n onlangse evaluering van BP se besigheid in Suidelike Afrika en hul doelwitte vir die streek in die algemeen, het BP besluit om hul besighede in sekere markte in die streek, onder andere Namibië, te verkoop.

BP was in die voordelige posisie in al hul markte in Suidelike Afrika vanweë die integrasie tussen voorsiening/aanbod en die onderskeie bemarkingsbesighede in hierdie lande. Oorskotaanbod kon maklik versprei word na lande in Suidelike Afrika waar BP belange gehad het. As gevolg van 'n toenemende aanvraag in Suid-Afrika, is daar nie meer 'n surplusaanbod in sekere markte in Afrika nie, wat beteken dat strategiese verbintenisse met hierdie markte daardeur beïnvloed is.

Die vraag is wat die effek hiervan op Agra, as verspreider van BP, sal wees. Die Besturende Direkteur van BP, Mnr MB Manyama het die versekering gegee dat BP sal voortgaan om hul besighede te bedryf ingevolge bestaande kontrakte en ooreenkomste. Hy het ook bevestig dat BP hul daartoe verbind het om te verseker dat die oordrag van die besigheid en- prosesse na die nuwe koper, wanneer geïdentifiseer, glad sal verloop.

BP is van voorneme om die besigheid as 'n lopende saak te verkoop met al die huidige fisiese bates, kliëntekontrakte en toegewyde en bekwame arbeidsmag.



TRAINING OF WORKERS

A SERVICE TO LAND USERS AND FARMERS

AGRA NEWS

NamPower is in the process of chemically controlling the re-growth of bush in its servitudes below its overland high-voltage power lines, for improved access, maintenance and prevention of faults (e.g. trees growing into overhead cables). They contracted AGRA Professional Services' Dr. Axel Rothauge to train their workers in the following theoretical and practical aspects of bush control:

- Methods of bush control
- Mixing and spraying of arboricides
- Cleaning of spraying equipment
- The need for protective clothing
- Quality control when using arboricides
- The role of the supervisor
- How to prevent lateral damage and pollution
- How to address spills and pollution
- Basic first aid for arboricide spraying teams



Dr Axel explaining and demonstrating the preparation and mixing of arboricide solution to NamPower/Clydon workers during the arboricide applicator training course

Much emphasis was placed on the efficiency of the control process (for the benefit of NamPower), the safety of workers and on reducing adverse environmental impact (for the benefit of farmers who farm underneath power lines).

Dr. Rothauge also initiated arboricide spraying on NamPower's Caprivi Interconnector power line to ensure that workers applied their newly acquired knowledge correctly. Similar practical training courses for workers, supervisors and farmers can be arranged on request. Contact Marieta Grobler at 061-2909208 or send an e-mail to advice@agra.com.na to state your training needs.

Dr Axel Rothauge
Technical Advisor: Animal Production



Dr Axel helping a sprayer during a "test-run" with blue dye only on valuable citrus trees



An arboricide applicator in full battle dress during rehearsal in the veld



The fully trained NamPower/Clydon arboricide applicator team, very proud of their new-found knowledge and skills



A worker receiving a training certificate at the end of the course, to indicate that he had successfully completed his training as an arboricide applicator



COLLECTING THE SEEDS

OF INDIGENOUS CLIMAX GRASSES

KNOW YOUR PRODUCT

On many farms, indigenous perennial climax grasses were grazed into extinction several decades ago. It would boost land and animal production significantly if these desirable species could be re-introduced, but their seed is not commercially available. Namibia's market for indigenous veld grass seeds is too small to warrant a commercial enterprise. However, at AGRA, we combine commercial objectives with service to the farming community. Accordingly, AGRA's Professional Services is collecting seeds of the desirable grasses *Schmidtia pappophoroides* (perennial Kalahari sand quick), *Anthephora pubescens* (wool grass), *Panicum maximum* (guinea grass) and *Digitaria seriata* (Sandveld finger grass) for packaging, sorting and sale to farmers to improve their veld and eventually, animal production. Also available is the seed of blue buffalo grass (*Cenchrus ciliaris*) "Biloela" cultivar, a medium-tall grower with higher palatability and acceptability to cattle and sheep than the traditional "Molopo" cultivar.



Dr. Axel Rothauge displays wild-collected seed of the indigenous perennial climax grass *Schmidtia pappophoroides*, laid out to dry and yet to be packaged for sale

Also available is the seed of blue buffalo grass (*Cenchrus ciliaris*) "Biloela" cultivar, a medium-tall grower with higher palatability and acceptability to cattle and sheep than the traditional "Molopo" cultivar.

Contact Marieta Grobler at 061-2909208 or send an e-mail to advice@agra.com.na to order your supply of indigenous perennial climax grasses for sowing into your veld and improving your farm's grass sward.

Dr Axel Rothauge
Technical Advisor: Animal Production



Women collecting grass seed in the road reserve to earn a decent living for themselves and produce seed which is not otherwise commercially available



SERVICE-RANGE-COUNTRYWIDE

Farmers' Ladder to Success

Agra's Professional Services will present the following lectures to farmers:

Venue : Agra/Bank Windhoek Ring
Date & Time : Every Thursday afternoon @ 14h00 - 17h00 (as per schedule below)

Date

8 April
15 April
22 April
29 April
6 May
27 May
10 June
24 June

Lecture Topic

Principles of breeding and cross breeding (part 2)
Identification and value of grass and bush species (veld practical)
Basic immunology and vaccines
Functional efficiency of beef cattle (practical demonstration)
Principles of breeding and cross breeding (part 3)
Veld quality and lick supplementation in the dry season
External parasites and remedies for their control
Cash flow planning

Speaker

Pieter Hugo
Dr. Axel Rothauge
Dr. Rainer Hassel
Kiep Lepen
Pieter Hugo
Dr. Axel Rothauge
Dr. Rainer Hassel
Günther Roeber

Dates will be announced

Farming finances
Measuring carrying capacity of the farm
Internal parasites and remedies for their control

Günther Roeber
Dr. Axel Rothauge
Dr. Rainer Hassel

Registration Fee

N\$100 per person, per lecture, which includes:

- lecture handouts in English or Afrikaans
- light refreshments

Enquiries/Bookings

Contact: Marieta Grobler
Telephone: 061 - 290 9208
Email: advice@agra.com.na

Proudly sponsored by Agra



VELD MANAGEMENT IN THE RAINY SEASON

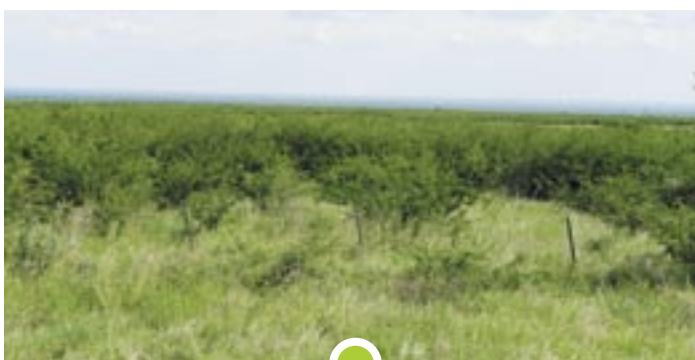
PART 3: THINNING INVADER BUSH

VELD MANAGEMENT

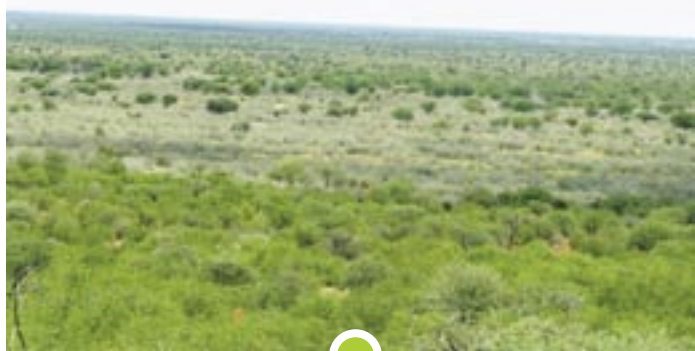
In the February and March issues of the “Ring”, maintaining the vigour of perennial grasses and keeping rain water on the farm were discussed as two priority objectives of veld management during the rainy season. In this issue, the third priority, namely the systematic and progressive control of invader bush, will be discussed.

What is bush encroachment?

Woody plants have several vital ecological functions in a savanna. They enrich the soil, improve water lift and drainage and provide feed, shelter and habitats to other plants and animals. When they become too abundant, they can cause more problems for land users than benefits. Bush encroachment occurs when a relatively open savanna veld type, in which woody plants usually make up less than 15% and grasses more than 66% of all plants, becomes over-grown with one or several types of invasive bush species. Eventually, these invasive woody species make up more than half of all plants, which is why “bush encroachment” is also known as “bush thickening”. Bush density typically increases from 500-1,200 bush/hectare to more than 3,000, sometimes as many as 12,000 bush/hectare. A bush on every square meter of land results in a very monotonous landscape (Photo 1, 2).



1. A dense stand of *Dichrostachys cinerea* (sickle bush) forms an impenetrable barrier to livestock production



2. Invasion by different species of bush, like on this hillside, by *Combretum apiculatum* (kudu bush) in the foreground, *Catophractes alexandrii* (Ighabba bush) in the middle and *Acacia mellifera* (blackthorn) in the background, is often the result of differences in soil structure (coarse uphill, finer downhill) and micro-climate (e.g. frost intensity)

Grasses, which used to be the dominant plant component of the savanna, get reduced to 20-25% of all plants, while the abundance of herbs, weeds and poisonous plants increases dramatically to about 20%. The structure of the savanna changes noticeably in the process. Even though the original bushes and trees are still present, they are now swamped by the wave of invasive bushes that washed over them.

However, it is not only the structure of the savanna that changes during bush encroachment, from open, grass-dominated to closed, bush-dominated. The composition of the grass sward also changes. Perennial and climax species, which make up 90-95% of the grass sward of a savanna in good condition, get reduced to less than 15% of all grasses and the majority now consist of annual, pioneer and sub-climax grass species.

Why is bush encroachment “bad”?

The most obvious effect of bush encroachment is that the picture of the landscape changes. Where previously the horizon had been visible, it is now obscured by a wall of invasive bushes. Larger animals find the bush thicket difficult to penetrate, especially if the invasive species is thorny. More than 4,000 bush/ha is considered impenetrable for cattle. As the invasive bush species out-competes and kills off less competitive species, the diversity of plant life is reduced. Thus, feed supply is less diverse and



3. An *Acacia mellifera* (blackthorn) bush dug out to demonstrate its extensive lateral root system and central tap root. Every soil level is approx. one meter deep.

less accessible, leading to poorer nutrition of browsers and reducing animal diversity. Overall, bush-encroached areas suffer a serious loss of biodiversity.

The effect of bush encroachment on groundwater and grass-based land productivity is equally alarming.

Effect of bush encroachment on groundwater

In a savanna, woody plants and grasses grow side-by-side in a competitive balance influenced mainly by available soil moisture. Sub-tropical woody plants make use of the C₃-pathway of photosynthesis whereas most sub-tropical grasses use the C₄ photosynthetic pathway. C₃-bushes use more water per unit of carbohydrate produced during photosynthesis than C₄-grasses and grow better during the cooler periods of the year (“spring” and “autumn”) than during the hot-wet season, which is the preferred growing season of C₄-grasses. Every kilogram of browse produced extracts 3-10 times more water from the

soil than the same quantity of grass¹. As a result, the groundwater level in bush-encroached areas is lowered dramatically, often by meters², natural fountains stop flowing, groundwater extraction rates diminish and grazing yield is drastically reduced, resulting in a “man-made drought”. The reverse can often be observed when bush surrounding a water source is thinned: the groundwater level in borehole rises, fountains start flowing again and the grass flourishes.

Water-inefficient C₃-bushes adapt to an arid environment like Namibia's by having a much higher root matrix potential than C₄-grasses. Bush can still absorb water from soil that is so dry that grass wilts. In addition, most invasive bush species have a tap root that can tap groundwater at lower levels than shallow-rooted grasses. Invasive bush possess a huge lateral root system that enables them to compete effectively with herbaceous plants in the top 50 cm of soil (Photo 3). It is said that the lateral roots of an *Acacia mellifera* bush extend about seven times further horizontally from the stem than the bush is tall. All these factors reduce total grass yield in a bush-encroached savanna and change grass type from a climax, mesophytic to a xerophytic, pioneer community.

Global warming is predicted to favour C₃- above C₄-plants. Thus, Namibian land users can prepare themselves for more bush encroachment in the future. Bush control and grass sward rehabilitation will become ever more important farming activities.

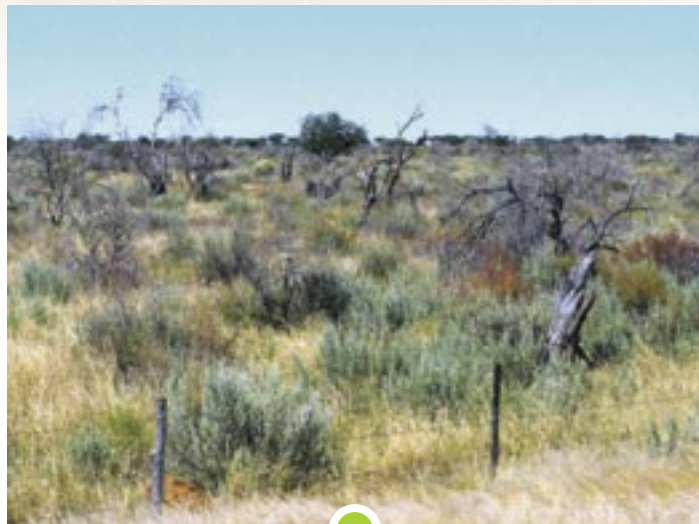
Effect of bush encroachment on grass-based land productivity

The extensive, dense and highly competitive underground network of lateral bush roots severely limits the amount of groundwater that is available to shallow-rooted herbaceous plants in a bush thicket. As a result, mesophytic climax grass species dry and die out and are replaced by xerophytic pioneer grasses and weeds that have a short lifecycle and are opportunistically adapted to infrequent water flushes (as during the rainy season). Of course, surviving on such limited and infrequent water resources means that these ephemeral herbaceous plants cannot assemble a large mass of above-ground leaves and stems, so the supply of herbaceous fodder on an area of bush encroached ranch land is severely reduced. Often, the grass-based carrying capacity of Namibian ranches is reduced to one-tenth of its original potential and this, of course, leads to a drastic decline in livestock production. Especially cattle and sheep are affected as they are primarily grazers. Bush thickening caused a 47% decline in cattle numbers in Namibia since the 1960's³. But even browsers are negatively affected because the dwindling variety of fodder bush species in a monostand of invasive bush leads to declining nutritive quality.

What can be done?

Long-lived woody plants stabilize a savanna ecosystem. Unfortunately, the most stable ecological state is the degraded bush-encroached savanna. Doing nothing will maintain this stable state *ad infinitum* and is not an alternative. The other extreme, a clear-felled savanna virtually devoid of woody plants, is also undesirable as it represents a completely unstable ecological state prone to wild and unpredictable swings.

When controlling bush encroachment, the farmer should have a picture of the “end game” (veld condition after bush control) in mind: how should the veld look when the farmer is done manipulating its botanical



4. All trees and bushes apart from the fairly resistant *Boscia albitrunca* (shepherd's tree) were killed by aerial application of arboricides. Already, the first signs of stink bush (*Laggera decurrens*) invasion are visible.



5. A few years after, and even with aftercare after aerial spraying, stink bush (*Laggera decurrens*) is still not under control and the hay made from this field is virtually unpalatable

composition? What mix of woody species and how many (number, size and age) of each species should remain? Obviously, the closer treated ranch land comes to the original appearance and structure of the savanna, pre-invasion, the more in balance the ranching operation will be with nature. Therefore, invasive bush on bush-encroached farms should be thinned to an optimum density as eradicating all woody species is not a natural solution. It represents an unnatural situation that will, over time, be rectified by nature. As stated at the outset, pristine Namibian savannas contain at least 15% woody plants approaching a natural density of, sometimes, up to 1,200 bush/ha. It is also often said that the “optimum bush density” (in 1.5 m tall bush-units per hectare) is about twice the long-term average rainfall (in mm/year). Reducing woody density to less than these targets will cause an “ecological vacuum” which will be filled, opportunistically, by the first invasive woody species of which the seed happens to be present in the clear-felled savanna. Increasingly, in Namibia, this is the dreaded stink bush or blue bush, *Laggera decurrens*. When landscape-level bush control is not followed by appropriate aftercare measures, it invariably results in an ecological disaster (Photo 4, 5) which takes a long time and lots of money and effort to repair; if it can be repaired.

to continue on page 10...

¹: DE KLERK, J.N., 2004. *Bush Encroachment in Namibia*. Ministry of Environment and Tourism, Windhoek, Namibia.

²: BOCKMÜHL, F., 2009. Evidence of impact of bush encroachment on groundwater resources. Proceedings: 13th Namibian Rangeland Forum, 27-29 October 2009, Neudamm College, Windhoek, Namibia.

³: SCHNEIDER, H.P., 1994. *Animal Health and Veterinary Medicine in Namibia*. Agrivet, Windhoek, Namibia.

Important points to remember

Leaving a sufficient number of bushes and trees, even of the primary invasive species, behind on the land to keep woody re-growth and re-colonization in check is thus a logical thinning method that retains some control over the ecosystem and prevents wild, unpredictable and uncontrollable ecological swings. Especially the larger individuals should be retained as it is predominantly the smaller, scrub-like mass that becomes problematic. Thinning can be achieved in various ways: selective chemical control, mechanical control or by hand. Some of these methods were described in previous editions of the "Ring" (e.g. March 2009, April 2009) and share important characteristics:

- Bush control has to be implemented systematically and become part of routine farm management. A farm is too big to be "bush-controlled" in one short go. Most farms require years of progressive effort to thin invasive bush to an acceptable density.
- All initial bush control actions require aftercare. Bush encroachment will always happen anew in a savanna from which the occasional, hot veld fire is excluded. Once gaps are opened up in the woody canopy, they tend to close again naturally. Constant follow-up is needed to keep a bush-controlled farm "open".
- Bush control can result in 10-20 tonnes of wood harvested per hectare; a valuable economic resource.
- Bush control on its own will increase grass production (quantity) several-fold, but livestock production only to a much

smaller extent. That is because more of the **same** pioneer and sub-climax grasses already present will grow vigorously after bush control, now that they have access to more groundwater, but not **better** (climax) grasses.

- Improving the productive state of a savanna requires more than bush thinning. Simply resting bush-controlled veld will not improve the composition and nutritive value of the grass sward, which also has to be pursued actively. However, bush control is a prerequisite for grass sward improvement (i.e. it cannot precede bush control).
- To maintain a grass sward in good (perennial, climax and sub-climax) condition requires maintaining the vigour of perennial grasses (see "Ring" of February 2010) and retaining rainwater on the farm (see "Ring" of March 2010) to make the veld "wetter".

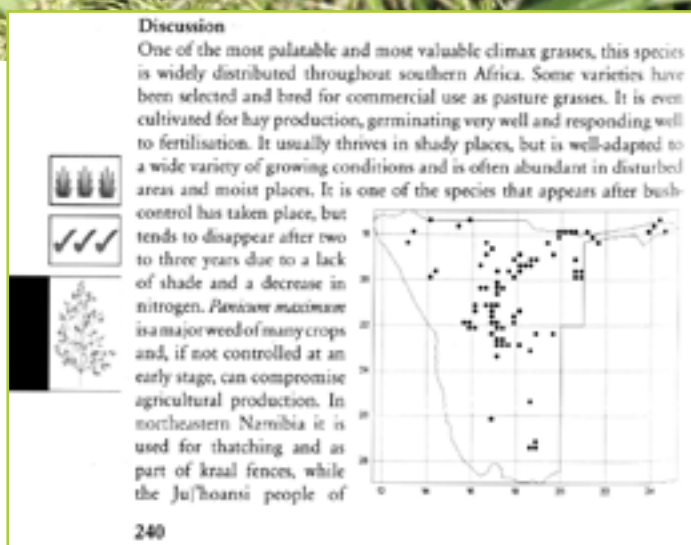
The principles of sustainable veld management, in which the relationship between all these interventions are explained, were discussed in the Special Edition Ring that is available together with a copy of the new edition of "Grasses of Namibia". Contact Marieta Grobler (061-2909208; advice@agra.com.na) to order a set (article plus book) from AGRA Professional Services to plan the recovery of your farm's productivity, incorporating all aspects of bush control, grass sward and grazing improvement and rainwater retention.

Dr Axel Rothauge
Technical Advisor: Animal Production



Did you know that the Cape Colony hunter Willem van Reenen shot 60 buffalo at the Leber river in southern Namibia as rations for his ox wagon drivers and hunting party in 1792 (Dr. Heinrich Vedder, 1938: "Das alte Süd-West-Afrika")? Did you know that one of the principal forage grasses of the Cape buffalo is the tall perennial climax grass *Panicum maximum*? Do you know that this grass, also known as "white panic" or "guinea grass" and the basis of Zimbabwe's beef industry, no longer grows in the Leber river area and that Cape buffalo would no longer survive there today?

BUT: Are you aware that *Panicum maximum* grows even today in suitable habitats in the Karas Mountains, Fish river and the Naukluff? For these and other interesting grass facts, buy the new edition of "Grasses of Namibia", originally written by M.A.N. Müller and revised by Johan van Eck in 2007. Order your book PLUS a detailed article on "Sustainable rangeland management in Namibia" for N\$150 from AGRA Professional Services. Contact Marieta Grobler at 061-2909208 or send an e-mail to advice@agra.com.na and your copy will be delivered to your nearest Agra branch.



And by the way, we stock seed of *Panicum maximum* as well. Re-seed suitable areas on your farm with this supreme buffalo grass and see your grass yield grow!



“FORGOTTEN” SHEEP DISEASES

IN NAMIBIA

ANIMAL HEALTH

In this and the subsequent article of the “Ring” three diseases are discussed which occurred much more commonly during the height of karakul farming in Namibia, because this breed appears to be particularly susceptible to these diseases. These were well known conditions at the time, but became less relevant with the demise of the karakul industry. Since there may be a return to profitable karakul farming, leading to an increase in the karakul sheep population in this country, but also for the benefit of current karakul farmers, it may be prudent to take a look again at these diseases, “Jaagsiekte”, “Uitpeuloog” and “Grootlamsiekte”.

Jaagsiekte (synonyms: Sheep Pulmonary Adenomatosis, Ovine Pulmonary Adenocarcinoma)

Malignant tumours are generally uncommon in domestic livestock. Sheep are affected by two neoplastic diseases or cancer, namely Jaagsiekte and Enzootic Nasal Adenocarcinoma (ENA). Jaagsiekte is a form of lung cancer which is induced by a retrovirus, a virus referred to as “*Jaagsiekte Sheep Retrovirus*” (*JSRV*), while ENA, as the name implies, is a tumour growing in the nasal passages. Jaagsiekte has virtually a worldwide distribution and can be found either sporadically or endemically in all countries where sheep are farmed, except Australia. The disease has been recognized in over 20 countries on the continents of Europe, Africa, America and Asia. The extent to which the disease occurs or the rate of infection can vary greatly, being as high as 20% in some flocks in South Africa, or infrequently diagnosed in the USA and Canada. Jaagsiekte is endemic throughout South Africa and used to occur commonly in Namibia. Studies in Britain and South Africa show that Jaagsiekte accounts for almost 70% of all sheep tumours.

Epidemiology and transmission

Goats seem to be much less susceptible than sheep. In sheep various breeds seem to differ in their susceptibility to the disease. In Southern Africa Merino and Karakul sheep and their cross-breeds are more susceptible than other breeds. Outbreaks occur when affected sheep which may or may not show clinical signs at the time, are introduced into a clean flock. Because it is a very slowly progressive disease, a year or two may elapse until the disease manifests itself in the flock after the introduction of an infected animal.

The natural route of infection is apparently via the respiratory system, transmission of the virus occurring by droplet inhalation (aerosol transmission) from an infected sheep which coughs to a susceptible animal. A typical, well differentiated tumour then develops in the lungs, which spreads progressively to affect many parts of the organ. Clusters of cancerous growths later obstruct the alveoli of the lungs leading to death due to a lack of oxygen. Like the cells from which they originated, the transformed tumour cells still secrete mucous. In this case they produce very large amounts of a clear, viscous fluid which accumulates in the air passages and makes breathing even more difficult. It also leads to coughing and since it contains virus particles and tumour cells it is the cause of droplet transmission. It appears that even sheep with

very small tumour lesions in their lungs may excrete the virus. Lambs less than 6 months of age are most susceptible and contract the disease from infected ewes.

Sheep suffering from Jaagsiekte often contract secondary bacterial infections, most commonly Pasteurellosis. In these cases death can then be the result of acute or chronic pneumonia. Observations suggest that more animals die as a result of the disease in winter or after a sudden drop in temperature, possibly as a result of a secondary pneumonia, caused by bacterial infection. This gives the false impression that the disease is more common in the colder months.

Clinical signs

The disease has a long incubation period in naturally infected sheep, and it generally takes 5 to 6 months before the symptoms start to appear. In some cases the incubation period can be between 8 and 24 months. Therefore the disease is seldom seen until sheep are 2 to 4 years old. Exceptional cases have been reported in lambs as young as 2 months and sheep as old as 11 years. Because the tumour grows very slowly, the disease is very far advanced by the time clinical symptoms are noticed. The most common symptoms are shortness of breath and labored breathing, esp. when sheep are driven, lagging behind the flock, reduced appetite, weightloss, coughing and a watery discharge from the nose. With secondary bacterial infection the discharge can change to pus. Other common diseases associated with a mucopurulent discharge from the nose include Bluetongue (**picture 1**) and Oestrus ovis (nasal worm). There is progressive deterioration and loss of condition and affected sheep die within 2 – 4 months after the onset of symptoms.

At post mortem examination the lungs have a very typical appearance. They show a grey or grayish-white discolouration and a firm, solid consistency, instead of the normal spongy consistency. (**pictures 2, 3 & 5**) The lungs can be three or more times their normal weight and fill the thoracic cavity. (**picture 4**)



Picture 1: Secondary bacterial infection as a complication of Bluetongue can also lead to a nasal discharge

of elasticity, the lungs will not collapse when the thorax is opened. Secondary infection may alter the appearance of the lung affected by Jaagsiekte and obscure the primary lesion. (**picture 8**) Bacteria associated with secondary infection include *Arcanobacterium pyogenes* and *Pasteurella*. Other organisms causing lung lesions include *Corynebacterium pseudotuberculosis*, *Mycoplasma* and lungworm. Therefore Jaagsiekte can be confused with various forms of chronic pneumonia (**picture 9**). Jaagsiekte must also be distinguished from Ovine Progressive Pneumonia or Meadi-visna (**pictures 10 & 11**) in those parts of the world this condition occurs. This disease

to continue on page 12...

continued from page 11...

is caused by a retrovirus of the lentivirus subgroup and as the name implies, is characterized by a chronic, progressive pneumonia and not a lung tumour. The tumour can spread to other parts of the body.

Treatment

No method of treatment is recognized or advised.

Control

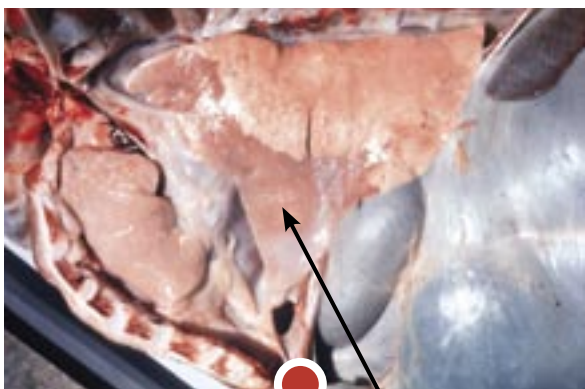
Jaagsiekte has been successfully eradicated in some parts of the world, but it entailed the slaughter of entire sheep populations. An alternative option is to establish and maintain closed flocks, free from infection. This is quite difficult, due to a lack of techniques to determine whether an animal, like for example a replacement ram, is free from infection. Under southern African conditions the infection rate in a flock can be reduced to less than 1 % by strict isolation and removal of animals showing early clinical signs. Regular close observation of the flock is required in this case. Furthermore, susceptibility to infection decreases rapidly after birth and lambs of 6 months of age are almost completely resistant to experimental infection. Therefore, if lambs of infected ewes are eliminated together with their dams, the prevalence of Jaagsiekte can be further reduced. Results of recent studies and new epidemiological data suggest that removing the lambs at birth from the ewe and rearing with artificial colostrum and milk in isolation may be a control measure to

consider. As natural infection by droplet inhalation requires close contact between animals and retroviruses are relatively unstable under hot and dry conditions, good management practices can contribute considerably to the control of the disease. Since infected animals do not produce any anti-JSRV antibodies, the possibility of developing an effective vaccine seems to be remote if not impossible at this stage.

Dr Rainer Hassel
Animal Health Consultant

References:

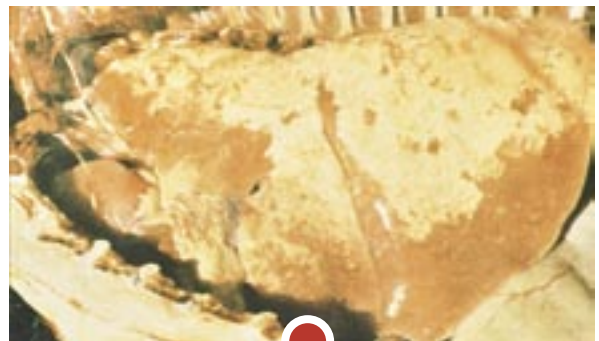
- Diseases of Sheep 4th edition, I. D. Aitken et al
- Infectious Diseases of Livestock 2nd edition, J. Coetzer, R. Tustin
- Diseases and Parasites of Cattle, Sheep and Goats in South Africa, Afrivet; Oberem, Odendaal et al



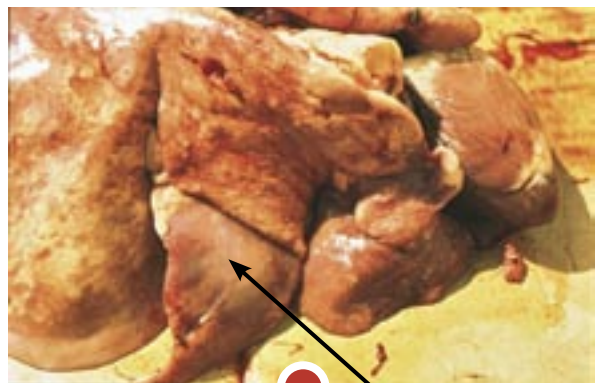
Picture 2: Typical lung tumour as a result of Ovine Jaagsiekte



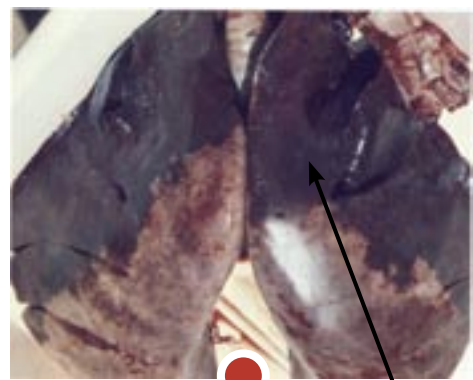
Picture 3: Cut surface of the lung showing normal lung tissue and lung tumour



Picture 4: Ovine Jaagsiekte; the lungs do not collapse and fill the whole thoracic cavity

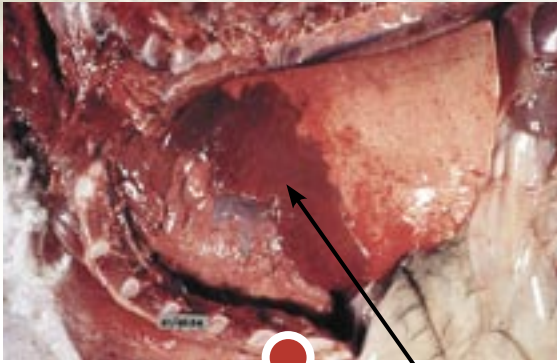


Picture 5: Ovine Jaagsiekte

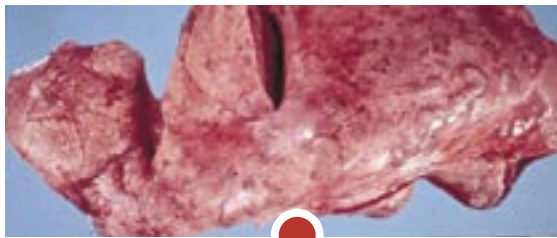


Picture 6: Acute Bronchopneumonia possibly Pasteurellosis

NOTICE



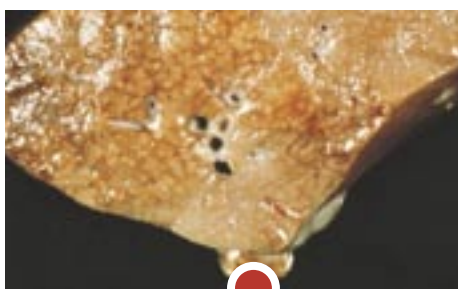
Picture 7: Acute Bronchopneumonia possibly Pasteurellosis



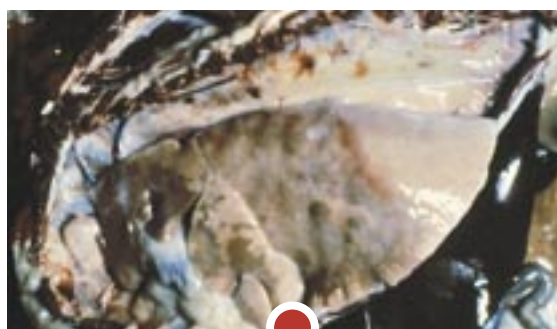
Picture 9: Chronic multifocal pneumonia



Picture 8: Ovine Jaagsiekte complicated by secondary bacterial Pneumonia



Picture 10: Chronic progressive pneumonia as a result of Maedi-visna



Picture 11: Chronic progressive pneumonia as a result of Maedi-visna

BELANGRIKE KENNISGEWING AAN AGRA LEDE

Neem asseblief kennis: die sluitingsdatum vir die inhandiging van skriftelike toestemmingsvorme vir die voorgestelde omskepping van Agra vanaf 'n koöperasie na 'n publieke maatskappy is Vrydag 30 April 2010 om 16H00.

Indien u nog nie u skriftelike toestemmingsvorm ingehandig het nie, handig dit asb. by u naaste Agra-tak in of faks dit na 061-2909227.

Vir navrae kontak 061-2909222.

IMPORTANT NOTICE TO AGRA MEMBERS

Please take note that the closing date for the handing in of the written consent forms for the proposed conversion of Agra is 30 April 2010 at 16H00.

If you have not yet handed in your written consent form, please hand it in at your nearest Agra branch or fax to 061-2909227.

For enquiries contact 061-2909222.



COSDEC

OTJIWARONGO BENEFITS FROM AGRA'S SUPPORT

AGRA NEWS

With the re-opening of Agra in Otjiwarongo in April 2009, Agra made a contribution towards the Community Skills Development Centre (COSDEC) in this town. Tools and equipment were donated and two bursaries were granted to children of Agra staff members. At present, 255 students are enrolled for various half and full-year courses at COSDEC, with another 110 students registered for the second half of the year. Courses offered include among others, building and maintenance; bricklaying and plastering; needlework and hospitality.

Gunther Roeber from Agra and Shiimi Jacobus, a staff member at Agra Otjiwarongo recently visited COSDEC and were impressed with the ongoing activities of the centre and the use of the tools and equipment provided by Agra. They were also happy to find that the beneficiaries of the bursaries, Angelina and Jurgen highly appreciate the opportunity given and are committed to make a success of it. This was confirmed by the head of the centre, Mrs Tusnelda Kamatui, who enthusiastically drives the growth of centre.

Angelina Jacobus, the daughter of Shiimi, enrolled for computer and hospitality classes, presented in the mornings and afternoons respectively. Jurgen Henk is from the Joy Centre in Otjiwarongo and attends hospitality classes. The Joy Centre actively supports less privileged community members, and this worthwhile initiative, managed by Reverend Muriel Fisch, was repeatedly supported by Agra. Jurgen said that this bursary made a dream come true – the dream to gain more skills on his passion – cooking. Angelina is equally thankful for the opportunity to acquire valuable practical skills. This, she says, is hard work keeping her busy each day, but most importantly, will assist her to make a success out of life. Father Shiimi is proud on what his daughter

is achieving, and is impressed with what COSDEC is offering, especially as it was his first visit to the centre.

Students of the metal work and building classes were completing the theoretical classes and started with the application of gained knowledge, supported by the use of equipment provided by Agra. The welding machine proved to be very valuable, especially as it is the second one made available for training and doubles the practising time per student. Agra is proud to be a partner in this worthwhile project focussing on the development of our community to equip them with practical skills – skills which are of relevance in the development of the agricultural sector. This

again becomes evident by the number of farmers who enrol farm workers' children at this and similar centres throughout the country.

The beneficiaries of the bursary, Angelina and Jurgen, together with Shiimi, Gunther and Tusnelda.



Gunther Roeber from Agra demonstrates the use of the welding machine



DARE TO CARE

GHOLFDAG

AGRA NEWS

Op 19 Maart is die twintigste jaarlikse Dare to Care gholfdag by die Windhoek gholfsklub gehou. Die doel van die dag is om geld in te samel vir die Dare to Care rampfonds. Hierdie fonds is in 2000 gestig deur die landboufamilie: die NLU, Voormeester, Meatco, die Vleisraad, die Akkerbouraad, Namib Meulens en Agra, om slagoffers van veldbrande finansieel te ondersteun. Sedert 2005 ondersteun hierdie fonds ook slagoffers van plaasaanvalle, plaasmoorde, vloede ens.

Ten spyte daarvan dat dit die begin van 'n langnaweek was, het 24 spanne ingeskryf. Die Dare to Care Chris Eloff Gholfdag hierdie jaar was ter herinnering aan Mnr Chris Eloff, een van die eerste veldbrandslagoffers ongeveer 10 jaar terug, wat onlangs aan kanker gesterf het.

Agra het een van die putjies geborg en twee spanne het ons verteenwoordig, 'n span van Okahandja en 'n span van Gobabis. Hulle het onderskeidelik elfde en twaalfde plek behaal. Die wenspan vir die dag was die span van British American Tobacco Company.

Die span van Okahandja, Mnr Frank van Straten, Andries van der Merwe, Boesman Pienaar en Werner Schollij.



Die span van Gobabis, Mnr Naas Labuschagne, Elias Nel, Louis van der Merwe en Kobus van der Merwe saam met Esmeralda Emad Eldin, Skakelbeampte van Agra.





LABOUR LAW

OVERTIME

LABOUR LAW

17.

(1) Subject to any provision of this Chapter to the contrary, an employer must not require or permit an employee to work overtime except in accordance with an agreement, but, such an agreement must not require an employee to work more than 10 hours overtime a week, and in any case, not more than three hours' overtime a day.

Clearly an employee cannot be forced to work overtime. The employer may request from the employee(s) to work overtime and the employee(s) may agree to work overtime. If it is agreed between the employer and the employee(s) to work overtime then the employer and the employee(s) must keep in mind that no more than ten (10) hours per week and in any case no more than three (3) hours per day may be worked as overtime. An agreement to work overtime between employer and employee(s), as with any other agreement, should be in writing and be signed by both the employer and employee(s) concerned.

(2) An employer must pay an employee for each hour of overtime worked at a rate at least one and one-half times the employee's hourly basic wage but, when an employee who ordinarily works on a Sunday or public holiday, works overtime on that Sunday or public holiday, the employer must pay that employee at a rate of at least double the employee's hourly basic wage.

When an agreement to work overtime has been reached between the employer and the employee(s) then the employer must pay to the employee(s) concerned the following:

- 1. Between Monday and Saturday – at least one and one half times (1.5) the employee(s) HOURLY BASIC WAGE. (e.g N\$ 10.00 PER HOUR BASIC WAGE X 1.5 = N\$ N\$ 15.00 per hour overtime rate.**
- 2. On Sundays and public holidays (if such days are ordinary working days for the employee(s)) – at least double (2x) the HOURLY BASIC WAGE. (e.g. N\$ 10.00 hourly basic wage X 2 = N\$ 20.00 per hour overtime rate.**

(3) An employer may apply in writing to the Permanent Secretary to increase the limits on overtime work referred to in subsection (1) if the employees affected by the application agree.

If more overtime hours are required than specified above in 17 (1) then the increase in limits must be agreed to by the employee(s) in writing, followed by an application for the increase in limits in writing to be made to the Permanent Secretary providing full details of why an increase in limit is sought, the class of employee(s) to whom the application applies, the new required limits, any conditions concerning the working of such overtime and the period required.

- (4) If the Permanent Secretary grants the application, the Permanent Secretary must issue a notice stipulating -
- (a) the class of employees to whom the notice applies;
 - (b) the new limits on overtime work;
 - (c) any conditions concerning the working of that overtime; and
 - (d) its period of application, and may amend or withdraw the notice at any time.
- (5) This section, except subsection (2), does not apply to an employee who is performing urgent work.

Employers must of course keep in mind that this section (except sub-section 17 (2)) does not apply to any employee who is performing urgent work

English

Accrue
Accuse
Accusation
Achieve
Acknowledge
Acquiesce
Acquire
Acquit
Acumen
Adamant
Add

Afrikaans

Aangroei by, aanwas
Beskuldig
Beskuldiging, aantyging
Bereik, verwesenlik
Erken, toegee
Berus in
Verkry, verwerf
Vrysprek, onskuldig bevind
Skerpsinningheid, vernuf
Volhou
Byvoeg, toevoeg

In our next article we address meal intervals.

Yours in Labour,

ROBIN C RAINES
PER: LABOUR DYNAMICS



Dagboek die volgende datums!

Katalogus Wildveiling

Saterdag, 1 Mei 2010
Sophienhof, Outjo

Navrae:
Rudolf Brandt: +264 81 122 3304 Frans Steyn: +264 81 124 7358
Chris Boshoff: +264 67 312 114/125 Janus Lepen: +264 81 124 7942
Piet Heimstadt: +264 67 312 129

Woensdag, 19 Mei 2010

GELLAP - OST - 10:00
Karakoel Ram & Ooi veiling
Gellap-Ost Navorsingstasie

Vrydag, 21 Mei 2010

Superior Genetics - 11:00
Agra/Bank Windhoek Ring, Windhoek

Donderdag, 27 Mei 2010

Hartebeestloop Bonsmara Produksieveiling - 11:00
Hartebeestloop

Navrae:
Bestuurder: Lewendehawe: Danie Byleveld - 081 129 3803
Bestuurder: Lewendehawe Operasioneel: Patrick vd Westhuizen - 081 128 9731
Bestuurder: Sloetvee Dienste: Kiep Lepen - 081 124 0648
Sloet - Grootvee: Barend Dorfling - 081 127 8806
Sloet - Kleinvee: George Pearson - 081 122 3623
Kommersiële Veilinge - nearest Agra Branch

MAY 2010

Mon	Tue	Wed	Thu	Fri	Sat	Sun
					Workers day Game Auction Outjo	2
3	4 Cassinga Day	5	6 Gibeon Ojwarongo	7 Araob/Samehaling Grooftertein S/stock Gobabis	8 Ostakati	9
10	11 Asab Outjo Rehoboth Cattle	12 Aranos Grooftertein	13 Ascension Day	14 Loskop/Kamanjab	15	16
17	18 Leonardville Rehoboth S/stock	19 Gellap-Ost KTG Keetmanshoop	20 Ojwarongo Okahandja	21 Mariental Gobabis	22	23
24	25 Africa Day	26 Skole open Karaburg Grooftertein	27 Bethanie Windhoek Cattle/1 Smallstock	28 Keetmanshoop	29	30
31			Harlebeestloop Boramara			

Enquiries
Manager: Livestock: Danie Byleveld Cell.: +264 81 129 3803
Manager: Livestock Operations: Patrick van der Westhuizen +264 81 128 9731
Manager: Stud Services Kiep Lepen Cell.: +264 81 124 0648
Stud Large stock Barend Dorfling Cell.: +264 81 127 8806
Stud Small stock George Pearson Cell.: +264 81 122 3623
Commercial and Communal Auctions nearest Agra Branch

Auction beginning time:
Stud Large stock at 11:00
Stud Small stock at 10:00
Commercial and Communal at 10:00
otherwise time will be given

HOCHFELD

Gesamentlike Produksieveiling

WINTERVEILING

Agra/Bank Windhoek Ring

Windhoek

18 Junie 2010 - 11h00

16 Wit Brahman Bulle • 2 Rooi Brahman Bulle

8 Simmentaler Bulle • 4 Braunvieh Bulle

Geregistreeerde Brahman en Simmentaler vroulike diere

Kommersiële Wit Brahman verse

Braford verse

Navrae: Kiep Lepen: 061 290 9220 / 081 124 0648 • E-pos: livestock@agra.com.na



Animal Commission - Call 081 124 3492



Lorraine van Heerden - Tel: 082 548223



MW Roodt - Tel: 082 568823



Joel De Beer - Tel: 081 224992
Call 081 128 7720



Henry & Renal Gouws - Tel: 082 802727



Hans Kabbour - Tel: 087 306210



Hans Kabbour - Tel: 087 306210



Delonke Branstetter Stead - Tel: 082 570225



Lorraine & Henriette Le Grange
Call 081 127 9172